

The logo for Scoprega, featuring the word "SCOPREGA" in a bold, white, sans-serif font. The letter "S" is stylized with a thick, blocky design. The background consists of several concentric, overlapping circular bands in shades of dark red and black, creating a tunnel-like effect.

**SCOPREGA**

LOOK BEYOND 2023

A modern, multi-story building with a dark blue and grey facade. The building has large glass windows and doors. A vertical sign on the building reads "SCOPREGA". The image is used as a background for the text.

**SCOPREGA**

LOOK BEYOND 2023

## FOREWORD

The Made-in-Italy signed Scoprega has always been featured by high technology, refined design, reliable performance and a lot of passion for what we do.

Our motto, "Look beyond", represents the vision of Scoprega: to look beyond, aiming at the constant improvement of our products and their production techniques.

The optimization of the production process is always complemented by the principles of eco-sustainability and it is for this reason that we move in the direction of energy saving and the ever-increasing use of low-emission recycled material.

We present the latest products developed by Scoprega that will be marketed starting from January 2023



# GE 1800 ROMA

The new Scoprega electric pump, GE 1800 ROMA, will be available from January 2023.

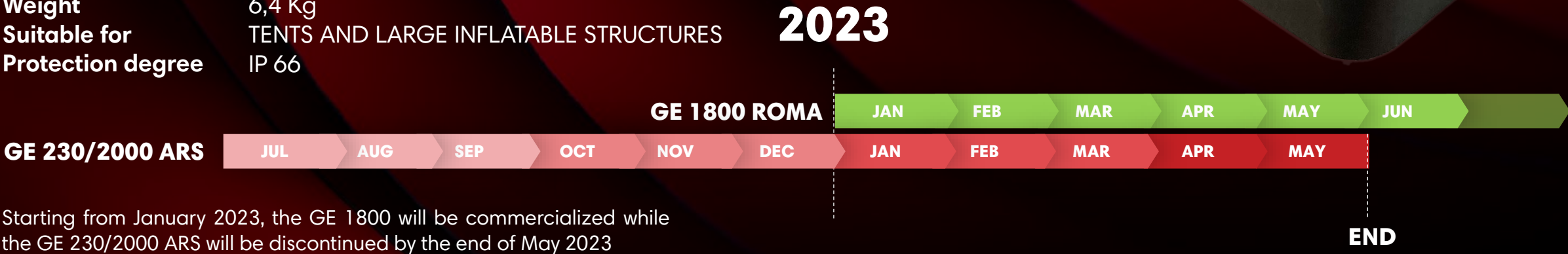
The GE 1800 ROMA is an all-weather-inflator (Protection degree: IP66) suitable for big inflatable structures.

Thanks to the **Automatic Refilling System (A.R.S.)**, the inflator is able to keep the nominal pressure inside the inflatable within pre-set values, independently from ambient temperature.

The pump constantly monitors the pressure variation inside the inflatable and regulates the operation to ensure pressure fill-up and pressure relief through pneumatic sensor.

The GE 1800 ROMA is supplied with a durable shoulder strap.

Article	GE 1800 ROMA
Part number	K6131900
Flow	2700 l/min
Max Pressure	360 ±30 mbar
Function mode	INFLATE/DEFLATE
Voltage	230/120 Vac – 50/60 Hz
Max Current	9-16 A
Dimensions	300 x 250 x 300 mm
Weight	6,4 Kg
Suitable for	TENTS AND LARGE INFLATABLE STRUCTURES
Protection degree	IP 66



## GE BTP 2 MiMa

The GE BTP-2 MiMa represents the evolution of two inflators such as the GE BP1 and the GE BTP-1. It is suitable for many applications but is ideal for SUP, being able to reach 1.2 bar (18 psi) of maximum pressure. It is equipped with a special pressure gauge for selecting the desired pressure. When it is reached, it stops automatically. It is also equipped with SUP fitting. Set of fittings for other applications are available on request. It comes with a bag with shoulder strap, comfortable and durable on which is possible to locate a Lithium battery (optional) that is able to inflate 3 SUP boards of 265 liters at 1250 mbar before it discharges completely. Average inflation time: 9'30"

<b>Article</b>	<b>GE BTP-2</b>
<b>Part Number</b>	K6131230
<b>Flow</b>	120 - 420 l/min
<b>Max. Pressure</b>	1,2 bar (18 psi)
<b>Function mode</b>	INFLATE/DEFLATE
<b>Voltage</b>	12V DC
<b>Dimensions</b>	in bag: 29,5 x 10,5 x 16 cm
<b>Current</b>	18 A max
<b>Weight</b>	2,5 Kg
<b>Suitable for</b>	SUP, KITES, BOATS



### 2023

	GE BTP-2 MiMa						JAN	FEB	MAR	APR	MAY	JUN
<b>GE BTP-1</b>	JUL	AUG	SEP	OCT	NOV	DEC	JAN	FEB	MAR			
<b>GE BP-1</b>	JUL	AUG	SEP	OCT	NOV	DEC	JAN	FEB	MAR			

Starting from January 2023, the GE BTP-2 MiMa will be commercialized while the GE BP-1 and BTP-1 will be discontinued by the end of March 2023

END

# SCOPREGA

LOOK BEYOND 2023

## GE 22 CAPRI

The GE 22 CAPRI is the result of a long research that aimed to add, inside an efficient and highly performing inflator for SUP, a further and fundamental feature for those who want to enjoy the best of an outdoor experience, namely: silence.

Thanks to the completely innovative inflation system, the noise of this inflator has been reduced to less than 75 dB. Extraordinary result for an inflator that still reaches 1250 mbar with a capacity of 170 l / min.

GE 22 CAPRI is supplied with a Lithium battery able to inflate 3 SUP boards of 265 liters at 1250 mbar, with one charge. Average inflation time: 7 minutes

### Article

### Part Number

### Flow

### Max. Pressure

### Function mode

### Voltage

### Max. current

### Dimensions

### Weight

### Suitable for

### Noise level

### GE 22 CAPRI

XXXXX

170 l/min

1,25 bar (18,1 psi)

INFLATE/DEFLATE

12V DC

17-33 A

18 x 12 x 38 cm

4 Kg

SUP, KITES, BOATS

<75 dB



# 2023

## Phase-in: Jan 2023

GE 22 CAPRI

JAN

FEB

MAR

APR

MAY

JUN



## GE 25 HP

Electric inflator for high pressure applications, wide air flow. The changeover from the turbine phase to the double compressor phase is automatic. Easy setting of the desired pressure via the pressure gauge, with automatic stop when pre-set pressure is reached.

The pump is supplied with a set of two Lithium (al LiFePO4) batteries that allows the inflation of 7 SUP boards of 265 liters at 1250 mbar. Average inflation time: 4'30"

LED indicators for battery autonomy status. Inflation fittings for all common valves. Shoulder bag included.

### Article

### Part number

### Flow

### Max Pressure

### Function mode

### Voltage

### Max. current

### Dimensions

### Weight

### Suitable for

GE 25 HP

K6130950

450 l/min (turbine: up to 80 mbar – 1.15 psi)

250 l/min (compressor: up to 1,5 bar – 22.0 psi)

1,5 bar (22.0 psi)

INFLATE/DEFLATE

12Vdc

27 A

Pump: 37 x 17 x 19 cm

inside bag: 41 x 21 x 27 cm

7 kg

SUP, KITES, BOATS

# 2023



GE 25 HP

JUL

AUG

SEP

OCT

NOV

DEC

JAN

FEB

MAR

APR

MAY

JUN

# Lithium Battery Kit

High performance LiFePO4 external battery kit,

Article	Li Battery – 12V 8000 mAh
Part number	8BOS0000
Type	Lithium Iron Phosphate (LiFePo4)
Capacity	8000 mAh
Voltage	12 V
Max. Current	20 A
Charging time (75%)	2 hours
Charging time (100%)	8 hours (50% less than a Lead Acid battery)



2023

LiFePo4  
Battery kit



# SCOPREGA

LOOK BEYOND 2023

## GE 900

The GE 900 and GE 900 ARS are electric inflators designed to inflate and deflate inflatable products of various sizes, intended for the most varied applications. They can reach the maximum pressure of 170mbar with a flow rate of 1700 l / min. All with a decidedly reduced acoustic impact (max 85dB).

Article	GE 900
Part number	K6131600
Flow	1700l/min
Max. pressure	170 mbar (2,5 psi)
Function mode	INFLATE/DEFLATE
Voltage	230/120 Vac – 50/60 Hz
Max. current	4 A
Dimensions	15 x 17 x 22 cm
Weight	2,1 Kg
Suitable for	TENTS AND SMALL INFLATABLE STRUCTURES



## 2023

The GE 900 is marketed starting from January 2022, while the production of the GE OV 10 will be discontinued at the end of December 2022

GE 900	JUL	AUG	SEP	OCT	NOV	DEC	JAN	FEB	MAR	APR	MAY	JUN
GE OV 10	JUL	AUG	SEP	OCT	NOV	DEC						



## GE 900

The GE 900 ARS are electric inflators designed to inflate and deflate inflatable products of various sizes, intended for the most varied applications. They can reach the maximum pressure of 170mbar with a flow rate of 1700 l/ min. All with a decidedly reduced acoustic impact (max 85dB).

The GE 900 A.R.S. has a digital display, easy and intuitive, which allows the setting of the maximum and minimum pressure within which the inflatable must be kept.

<b>Article</b>	GE 900 A.R.S.
<b>Part number</b>	K6131630
<b>Flow</b>	1700l/min
<b>Max. pressure</b>	170 mbar (2,5 psi)
<b>Function mode</b>	INFLATE/DEFLATE
<b>Voltage</b>	230/120 Vac – 50/60 Hz
<b>Max. current</b>	4 A
<b>Dimensions</b>	23 x 17 x 22 cm
<b>Weight</b>	2,8 Kg
<b>Suitable for</b>	TENTS AND SMALL INFLATABLE STRUCTURES



## 2023

The GE 900 A.R.S. is marketed starting from January 2022, while the production of the GE OV 10 will be discontinued at the end of December 2022.

<b>GE 900</b>	JUL	AUG	SEP	OCT	NOV	DEC	JAN	FEB	MAR	APR	MAY	JUN
<b>GE OV 10</b>	JUL	AUG	SEP	OCT	NOV	DEC						

# SCOPREGA

LOOK BEYOND 2023

## GM 5

The new GM 5 is a reliable and efficient hand pump (less effort to inflate). It is manufactured with recycled and recyclable plastic material and the inner tube is in CIRCAL® aluminum, composed of 75% recycled aluminum.

"No hose kinking" during inflation thanks to the air outlet placed on the pump body itself

The feet at the base are foldable and the handle can be disassembled, saving space in the package.

The GM5 comes with adapters for various types of inflation valves and with a high quality 1.25m hose (LDPE + EVA).

**Article**

GM 5

**Part number**

Not yet available

**Flow**

2 x 2400 cc

**Max. Pressure**

1 bar (600N thrust)

**Function mode**

INFLATE-DEFLATE

**Inflate mode**

DOUBLE/SINGLE ACTION

**Dimensions**

17 x 16 x 51 cm (folded)

**Weight**

1,4 Kg

**Suitable for**

KITE, KAYAK, BOATS, TENTS



## 2023

## Da gennaio 2023

GM 5  
(Italy)

JAN

FEB

MAR

APR

MAY

JUN

## GM NX & GM NXs

The GM NX and GM NXS represent a new generation of environmentally friendly hand pumps suitable for all types of inflatable products. The exclusive design guarantees high efficiency and ease of use. The new body in 75% recycled aluminum (CIRCAL®) guarantees greater resistance to shocks and increases its reliability, reducing the use of plastic by more than 70%.

The main features are:

- Double / single flow manual switching, to minimize inflating effort
- Ergonomic handle with integrated air filter
- Inflation port on the pump body (no hose kinking)
- Integrated pressure gauge

<b>Article</b>	GM NX	GM NXS
<b>Part number</b>	K6121100	K6121150
<b>Flow</b>	2x2000cc	2x1500cc
<b>Max. Pressure</b>	2 bar (600N thrust)	2 bar (600N thrust)
<b>Function mode</b>	INFLATE – DEFLATE	INFLATE – DEFLATE
<b>Inflate mode</b>	DOUBE/SINGLE ACTION	DOUBE/SINGLE ACTION
<b>Dimensions</b>	14 x 30 x 65 cm	14 x 30 x 58 cm
<b>Weight</b>	1,6 Kg	1,5 Kg
<b>Suitable for</b>	SUP	SUP

# 2023



**GM NX**  
**GM NXs**

JUL

AUG

SEP

OCT

NOV

DEC

JAN

FEB

MAR

APR

MAY

JUN



# SCOPREGA

LOOK BEYOND 2023

## VA NX

Starting from January 2023, Scoprega will launch the new **VA NX** inflation valve. VA NX is smaller than other valves currently available on the market. The valve body can be replaced regardless of the inflatable to which it is applied. It will be available in various colors, and it will also be possible to customize the logo on the cap. Together with the standard version it will also be possible to order the version with mesh, **VA NX-M**. Furthermore, the valve nut can be ring-type or it can be welded to the fabric of the inflatable.

Article	<b>VA NX</b>
Part number	VG1S0000
Dimensions	Ø69 x 42 mm [ØD x h]
Fabric hole diameter	43 mm
Fabric thickness	0,5 mm – 3,5 mm
Nominal flow	2000 l/min
Reference Standard	ISO no. 15738_2019

**VA NX**

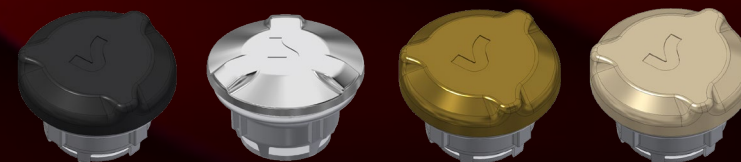
**VA NX-M**



+



**2023**



## Phase-in Jan 2023

VA NX

JAN

FEB

MAR

APR

MAY

JUN

Scoprega is able to supply inflation systems for many applications.  
We constantly work alongside our customers on the development of custom applications.  
For any request or additional information, please contact our sales managers.



facchinetti@scoprega.it



brusamolino@scoprega.it



n.locatelli@scoprega.it

[www.scoprega.it/contatti/contatti-commerciali/](http://www.scoprega.it/contatti/contatti-commerciali/)

The logo for Scoprega, featuring the word "SCOPREGA" in a bold, white, sans-serif font. The letter "S" is stylized with a thick, blocky design. The background consists of several concentric, overlapping circular bands in shades of dark red and black, creating a tunnel-like effect.

**SCOPREGA**

LOOK BEYOND 2023

[www.scoprega.it](http://www.scoprega.it)