

LOWRANCE

MARINE ELECTRONICS | 2020





**Lowrance Founder
Darrell Lowrance 1938 – 2019**

In March, Lowrance founder and creator of the first recreational fishfinder passed away at the age of 80.

Darrell served as President and CEO of Lowrance Electronics from 1964 to 2006, and was responsible for many breakthroughs in marine electronics. In addition to the first recreational sonar product for anglers, he led the development of the first graph recorder, the first integrated sonar/GPS unit, and many others. He was President of the American Fishing Tackle Manufacturer's Association (AFTMA) from 1983-1984. Darrell also served as a member of the Board of Directors for AFTMA from 1978-1986, and again in 1988, and was inducted into the Bass Fishing Hall of Fame in 2013.

It all started in the 1950s, with Darrell Lowrance and his efforts to use transistorized sonar technology to detect fish. The first production runs were plagued by quality issues from contract manufacturers, so Lowrance came up with a new plan that has defined the Lowrance legacy for six decades – a legacy born on the water.

He did just that in 1957 with the introduction of the first recreational fishfinder, the FISH-LO-K-TOR, affectionately known by millions as the Little Green Box.

His efforts didn't just change the way people fish, but paved the way for the recreational fishfinder industry. Lowrance, the brand, has continued on the path of innovation and achievement that still drives us today.



***“WE are going to
change the way
people FISH.”***
-Darrell Lowrance

What's New for 2020?

Ghost Trolling Motor



[Learn more about Ghost on page 14](#)

HOOK Reveal



[Learn more about HOOK Reveal on page 10](#)

Table of Contents

- 02** SONAR
- 04** FAMILY BREAKDOWN
- 06** HDS LIVE
- 08** ELITE-TI²
- 10** HOOK REVEAL
- 12** PORTABLE SONAR
- 14** GHOST TROLLING MOTOR
- 16** C-MAP® CARTOGRAPHY
- 18** MAPPING UPGRADES
- 20** NAVIGATION
- 22** NETWORKING
- 24** PART NUMBER LIST
- 28** SPECS & DRAWINGS

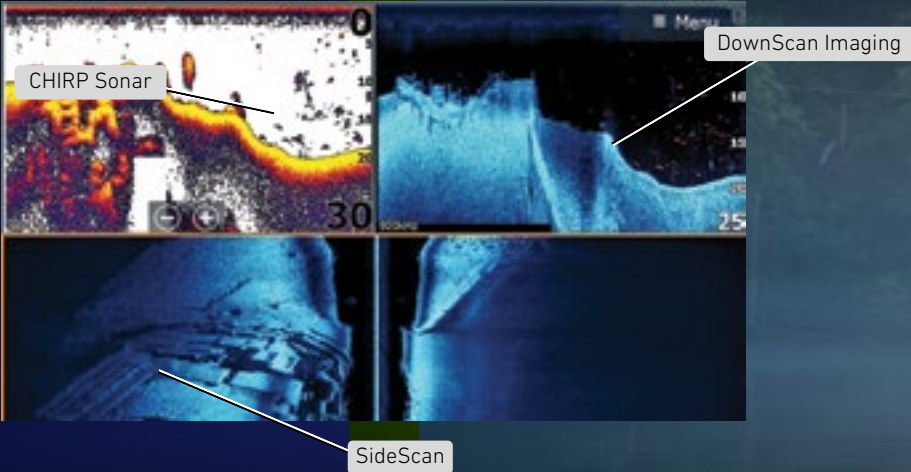
SONAR TECHNOLOGY

For more than six decades, Lowrance® has pushed the limits of technology to deliver innovations like the first consumer fishfinder, the first color fishfinder, the first sonar/GPS combo, the first digital sonar, grayline/colorline and much more.

For 2020, Lowrance has continued to push the boundaries of sonar technology and navigation tools that take fishfinder/chartplotters to a new level.

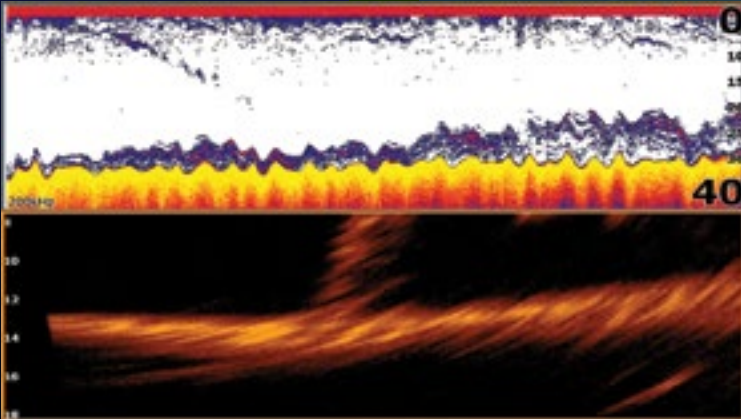
ACTIVE IMAGING™

Perfect for pinpointing fish-holding areas like rock piles, standing timber, weedbeds, ditches and drop-offs, Active Imaging™ 3-in-1 with Lowrance CHIRP, SideScan and DownScan Imaging™ delivers superior clarity, the best target separation and extreme, high-resolution images of fish and structure at a longer range than any other structure imaging technology.

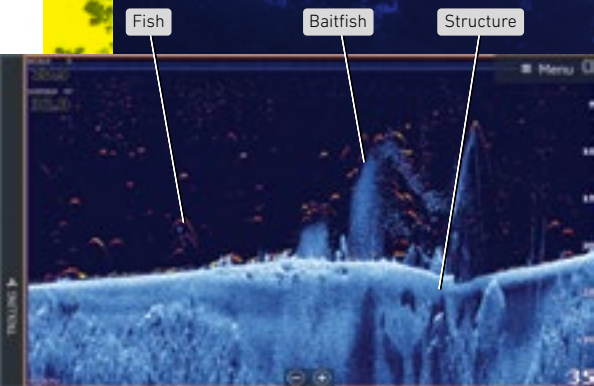


LIVESIGHT SONAR

Perfect for drop-shotting, vertical jigging or tracking bait in front of your boat, LiveSight™ Sonar is the perfect complement to Active Imaging™. LiveSight™ turns all fishing into sight fishing with real-time views of bait and fish movements. Watch fish react to your lure – as it happens – and gain insight on what's working, what isn't and what to do next.

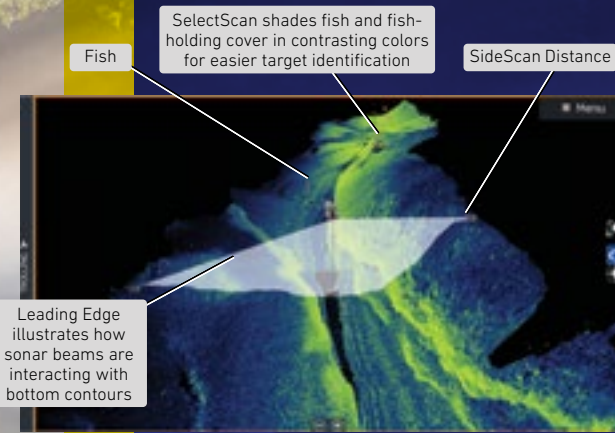


FISHREVEAL™



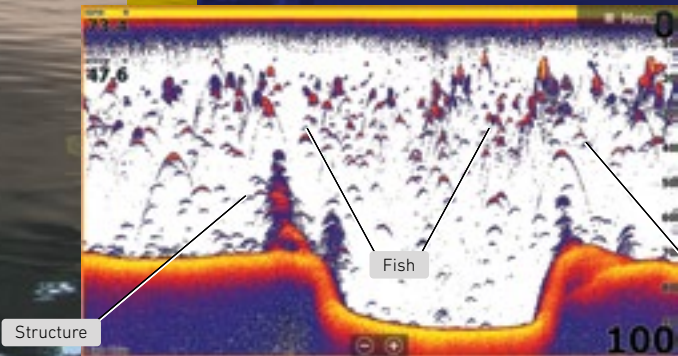
Makes fish easier to see by combining on one screen the proven target identification of Lowrance CHIRP sonar with the high-resolution images of bottom detail and structure from DownScan Imaging™.

STRUCTURESCAN® 3D WITH ACTIVE IMAGING



Know where fish and structure are located in relation to your boat with three-dimensional views of fish, structure and bottom contours from StructureScan® 3D with SideScan and DownScan Imaging™.

LOWRANCE CHIRP



Get the best views of fish right out of the box – even when they are close to the bottom or suspended in tight schools – with Lowrance CHIRP sonar, featuring exclusive Advanced Signal Processing (ASP™).

Colorline™ illustrates target hardness — the lighter the color, the harder the target

FAMILY BREAKDOWN

Whether you are a serious tournament angler, weekend warrior, or just fish casually, we have a product that will be a perfect fit for the way you fish and the water you fish, so you can have more success on your next fishing trip.

HDSLIVE

America's Number One Fishfinder

HDS LIVE builds on the Lowrance legacy as the leader in marine electronics with innovative features like integrated support for Active Imaging™ 3-in-1, LiveSight™ sonar, LiveCast™ smartphone control, full integration with Ghost trolling motor, Genesis Live real-time mapping and the best suite of navigation tools ever built into an HDS display.

ELITE Ti²

First Fishfinder with Wireless Networking

Lowrance® Elite Ti² displays offer popular premium features like an easy-to-use touchscreen, Active Imaging™ 3-in-1 support, wireless networking, built-in Genesis Live real-time mapping, wireless connectivity and full integration with the Ghost trolling motor – all at a better value than any display in its category.

HOOK REVEAL

A Revelation in Easy Fish Finding

New to the HOOK series, FishReveal™ makes identifying fish easier by combining the benefits of Lowrance CHIRP sonar and DownScan Imaging™ on one screen. HOOK Reveal's improved US Inland map and Genesis Live real-time mapping, make locating key fishing areas – or mapping new ones – quick and easy.



A fishfinder for every angler

CAPABILITIES	HDSLIVE	ELITETi²	REVEAL
SolarMAX™ HD Display	<div></div>		
SolarMAX Display		<div></div>	<div></div>
Touchscreen	<div></div>	<div></div>	
Multi-touch	<div></div>		
High-Performance Processor	<div></div>		
CHIRP	<div></div>	<div></div>	<div></div>
DownScan Imaging™	<div></div>	<div></div>	<div></div>
SideScan	<div></div>	<div></div>	<div></div>
FishReveal	<div></div>	<div></div>	<div></div>
StructureScan® 3D	<div></div>		
Active Imaging™	<div></div>	<div></div>	
LiveSight™ Real-Time Sonar	<div></div>		
LiveCast™ Smartphone integration (HDS 16/12)	<div></div>		
Genesis Live	<div></div>	<div></div>	<div></div>
Automatic Routing	<div></div>	<div></div>	
Smartphone notifications	<div></div>	<div></div>	
Wireless networking		<div></div>	
Live network sonar	<div></div>		
Dual Channel CHIRP	<div></div>		
Internal GPS antenna (excludes sonar only displays)	<div></div>	<div></div>	<div></div>
Wireless connectivity	<div></div>	<div></div>	
NMEA 2000®	<div></div>	<div></div>	
NMEA 0183	<div></div>	<div></div>	
Engine Integration	<div></div>	<div></div>	
SmartSteer MotorGuide® Xi5 trolling motor control	<div></div>	<div></div>	
SmartSteer™ outboard pilot	<div></div>		
Power-Pole® anchors	<div></div>	<div></div>	
SiriusXM® Marine Weather	<div></div>		
Radar	<div></div>		
SonicHub® 2	<div></div>	<div></div>	
Ethernet	<div></div>		
Video input	<div></div>		

HDS LIVE



Key Features

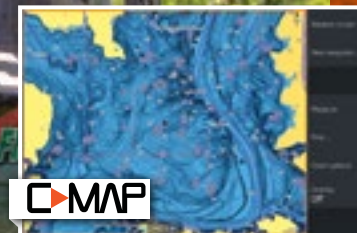
- SOLARMAX™ HD SCREEN TECHNOLOGY
- BUILT IN LOW, MEDIUM AND HIGH CHIRP
- INTEGRATED SUPPORT FOR ACTIVE IMAGING™ 3-IN-1 SONAR WITH SIDE SCAN AND DOWN SCAN IMAGING™
- LIVESIGHT™ REAL-TIME SONAR SUPPORT
- FISH REVEAL™
- FULL INTEGRATION WITH GHOST TROLLING MOTOR
- GENESIS LIVE MAPPING
- PRELOADED C-MAP® US ENHANCED MAPPING
- C-MAP® EASY ROUTING + NAVIONICS® AUTOROUTING CAPABILITY
- LIVECAST™ (HDS LIVE 16/12 only)
- SMARTPHONE NOTIFICATIONS
- TOUCHSCREEN CONTROL OF TROLLING MOTOR, OUTBOARD PILOT AND POWER-POLE®
- SONIC HUB®2 AND SIRIUSXM® MARINE WEATHER/AUDIO READY
- SLEEK, TRUE FLUSH-MOUNT DESIGN

INLAND OR COASTAL - WE'VE GOT YOU COVERED

Whether you are fishing an inland lake or out on the coast, preloaded C-MAP US Enhanced mapping has you covered with 1-foot contours on nearly 4,000 inland lakes, plus the legendary C-MAP coastal coverage boaters have relied on for years.

KEY FEATURES

- Inland and Coastal Coverage of the US, including Hawaii and Alaska.
- 3,850 High-Definition Lakes with 1-foot contours
- 11,250 Standard Definition Lakes



C-MAP

America's Number One Fishfinder

Whether you are a tournament fisherman, seasoned pro or weekend warrior – any angler that is serious about catching fish in freshwater or saltwater – we have your fishfinder. It's HDS LIVE.

HDS displays have been the choice of fishing pros for years. HDS LIVE carries on that tradition with extreme, high-resolution Active Imaging™, LiveSight™ real-time sonar, full Ghost trolling motor integration and the best suite of navigation tools ever built into an HDS display.

LR-1 Remote

Control your HDS LIVE display from anywhere on your boat. Mark waypoints and zoom in/zoom out using preprogrammed keys and access up to five user-programmable options without ever touching your display.



ELITE **Ti²**



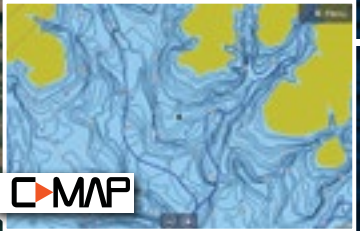
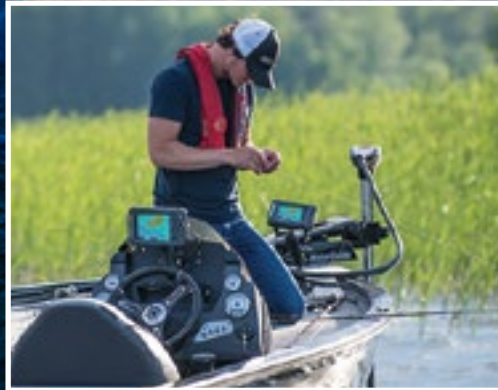
First Wireless Networking Fishfinder

Elite Ti² gives anglers a level of powerful fishfinding and navigation functionality usually reserved for more expensive fishfinder/chartplotters.

Add Elite Ti² to your rig and enjoy premium features from Active Imaging™, Genesis Live onscreen mapping, and preloaded C-MAP US Inland mapping to wireless networking, smartphone notifications and full integration with the Ghost trolling motor.

Wireless Networking

Wirelessly share sonar, waypoints and routes between Elite Ti² displays, eliminating the hassle of running cables between the displays.



Key Features

- EASY-TO-USE TOUCHSCREEN
- BUILT-IN SUPPORT FOR ACTIVE IMAGING™ 3-IN-1 SONAR (CHIRP, SIDE SCAN AND DOWNSCAN IMAGING™)
- FISHREVEAL™
- WIRELESS NETWORKING
- FULL INTEGRATION WITH GHOST TROLLING MOTOR
- GENESIS LIVE
- TOUCHSCREEN CONTROL OF TROLLING MOTORS AND POWER POLE® ANCHORS
- SONICHUB2® AUDIO SERVER
- ENGINE INTEGRATION
- PRELOADED C-MAP® US INLAND MAPPING WITH 1-FOOT CONTOURS ON NEARLY 4,000 LAKES
- WIRELESS CONNECTIVITY + SMARTPHONE NOTIFICATIONS
- C-MAP® EASY ROUTING + NAVIONICS® AUTOROUTING CAPABILITY



GET ALL THE DETAIL WITH C-MAP US INLAND MAPPING

Find key fishing areas faster with C-MAP US Inland maps built into Elite Ti² displays, featuring 1-foot contours on nearly 4,000 lakes.

KEY FEATURES

- 3,850 High-Definition US Inland Lakes with 1-foot contours
- 11,250 Standard Definition Lakes



HOOK REVEAL

Key Features

- EASY TO USE
- FISHREVEAL™
- GENESIS LIVE REAL-TIME MAPPING
- AUTOTUNING SONAR
- DOUBLE THE SONAR COVERAGE OF OTHER FISH FINDERS
- NEW FISHFINDING COLOR PALETTES
- TRIPLESHOT™ SONAR WITH HIGH CHIRP, SIDE SCAN AND DOWNSCAN IMAGING™ OR SPLITSHOT™ HIGH CHIRP AND DOWNSCAN IMAGING™
- PRELOADED C-MAP US INLAND MAPPING OR GPS PLOTTER
- MAPPING OPTIONS INCLUDE C-MAP, C-MAP GENESIS, NAVIONICS® AND MORE
- MICROSD CARD SLOT
- EASY FRONT-DASH OR GIMBAL-BRACKET MOUNT
- FULL CHARTPLOTTER AND BASIC GPS PLOTTER MODELS
- MICROSD CARD SLOT ENABLES GENESIS LIVE ON GPS PLOTTER MODELS

A Revelation in Easy Fish Finding

The all-new HOOK Reveal makes fishing easier, delivering powerful performance with proven fish-finding tools including, Autotuning Sonar, SideScan* and DownScan Imaging™ and now FishReveal™, which makes fish easier to see by combining the benefits of Lowrance CHIRP sonar and DownScan Imaging™ on one screen.

Whether you're fishing a local spot or unfamiliar water, find the best fishing areas with preloaded US Inland mapping or map uncharted water – in real time – with Genesis Live.

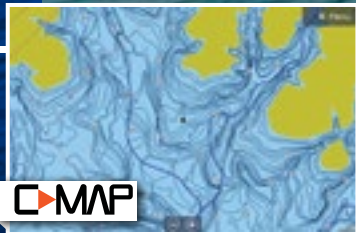
*Requires TripleShot transducer

C-MAP US INLAND MAPPING – ALL THE DETAIL AND THEN SOME

Quickly zero in on key fishing areas with C-MAP US Inland maps built into HOOK Reveal displays, featuring 1-foot contours on nearly 4,000 lakes.

KEY FEATURES

- 3,850 High-Definition US Inland Lakes with 1-foot contours
- 11,250 Standard Definition Lakes



THERE'S A HOOK REVEAL MADE FOR YOU

MODEL	HOOK² 4X	HOOK² 4X Plotter	HOOK Reveal 5x Plotter	HOOK Reveal 5	HOOK Reveal 7x Plotter	HOOK Reveal 9	HOOK Reveal 5	HOOK Reveal 7x Plotter	HOOK Reveal 7	HOOK Reveal 9
TRANSDUCER	BULLET	BULLET	SPLITSHOT	SPLITSHOT	SPLITSHOT	SPLITSHOT	TRIPLESHOT	TRIPLESHOT	TRIPLESHOT	TRIPLESHOT
FISHREVEAL										
BROADBAND SOUNDER										
CHIRP										
DOWNSCAN IMAGING										
SIDESCAN IMAGING										
GENESIS LIVE										
GPS MAPPING										
GPS PLOTTER										

Select a HOOK Reveal for the way you fish from combos featuring Tripleshot 3-in-1, SplitShot 2-in-1 and sonar with chartplotter or basic GPS plotter navigation capability.

PORTABLE SONAR



HOOK Ice Machines

Lowrance® Ice Machines, All-Season and Portable Power Packs area easy to transport, come with an adjustable display mount, a pair of tackle boxes, a power cable and a battery ensuring you have everything you need, whether you are fishing from a small boat, or a stationery location, like ice or a dock.



HOOK 7 Ice Machine



HOOK² 4x All Season Pack

HOOK Reveal 7 Ice Machine

You'll get better views of fish and the water column when you take the HOOK Reveal 7 Ice Machine on your next fishing trip. The perfect mix of simplicity and power, HOOK Reveal displays are easy to use, offer quick access to key features and deliver proven Lowrance CHIRP performance.

HOOK Reveal 5 Ice Machine

The HOOK Reveal 5 Ice Machine offers simple menus, easy access to key functions and Autotuning sonar. Powered by proven Lowrance® performance, the Ice Machine features High CHIRP coverage, plus a built-in, GPS with preloaded C-MAP US Enhanced mapping.

Portable Power Packs

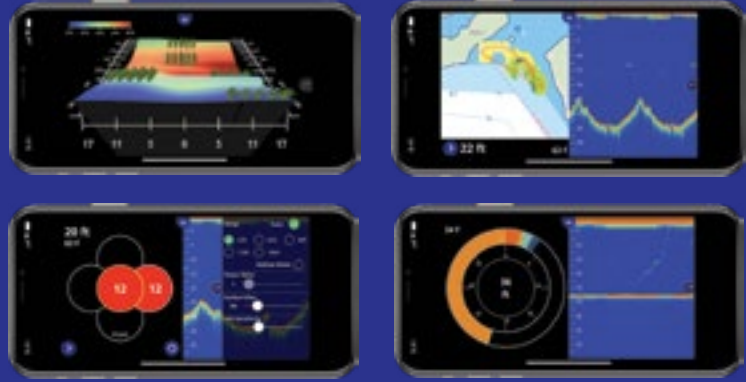
Whether fishing from the ice, a bank or a dock, you will have an easier time viewing sonar returns with the Portable Power Pack for HDS LIVE, Elite-Ti² and HOOK Reveal displays. Use your 7- or 5-inch display on your boat or go portable and take it anywhere you fish.

HOOK² 4x All Season Packs

From frozen lakes to summer heat and everything in between, you'll be fishing ready for all conditions with portable, HOOK² 4x All-Season Packs, featuring Lowrance Broadband sonar and exclusive Autotuning sonar. Sonar only and GPS Plotter models available.

FishHunter™

The days of having to own a boat to use fishfinding sonar are over. Take FishHunter™ anywhere you fish – dock, bank, ice or kayak – and you will always know where to cast.

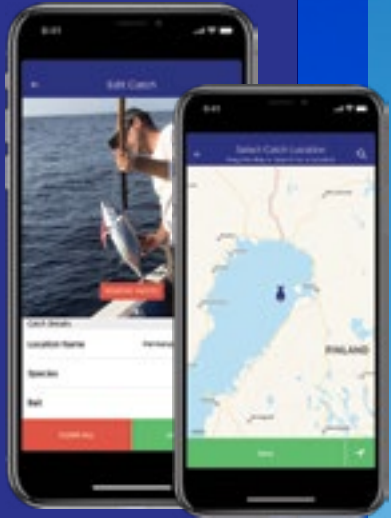


FishHunter™ Pro

- No internet or cellular connection required
- Reliable WiFi connection with range up to 160 ft. (55m)
- View sonar on free FishHunter™ app, available for IOS and Android
- Tri-frequency transducer with 381kHz, 475kHz and 675kHz frequencies
- Raw sonar, Fishing and Ice fishing views
- Create custom color contour maps

FishHunter™ 3D

- No internet or cellular connection required
- Reliable WiFi connection with range up to 200 ft. (65m)
- View sonar on free FishHunter™ app, available for IOS and Android
- Includes 5 tri-frequency transducers with 381kHz, 475kHz and 675kHz frequencies
- 3D fishing, Directional Casting and Ice fishing views
- Create custom color contour maps and structure maps



CASTABLES



GH0ST

TROLLING MOTOR

Quiet by Name. Powerful by Design.

Reliable, rugged and built to last, the new ultra-quiet Lowrance Ghost freshwater trolling motor lets anglers fish longer, run faster and move in closer without spooking fish.

We put our 60-plus years of innovation and marine electronics expertise to work in designing the Ghost freshwater trolling motor. After years of researching when and why trolling motors fail, we went to work to exceed those standards, building Ghost in-house, from scratch.

Four years and 10,000 testing hours later, we have delivered the quietest, most reliable, and most powerful trolling motor on the market.

Key Features

- RELIABLE
- SILENT OPERATION
- FASTEST TOP-END SPEED
- TOTAL INTEGRATION WITH HDS LIVE, HDS CARBON AND ELITE Ti²
- FLY-BY-WIRE STEERING
- PLUG-AND-PLAY HDI NOSECONE, PLUS OPTIONAL ACTIVE IMAGING 3-IN-1 NOSECONE TRANSDUCERS
- CONFIGURABLE FOOT-PEDAL
- INTERFERENCE FREE
- FLEXIBLE INSTALLATION
- 360° BREAKAWAY MOUNT
- EASY TO STOW AND GO



Incredible Performance

Zoom from spot to spot or zip across the cove with up to 25-percent more thrust than competing models. Ghost's brushless motor also delivers 60-percent better run-time efficiency, so you can enjoy the best top-end speed and acceleration without sacrificing battery life. Stay out later and run it harder – you will fish longer with Ghost.



Silent Operation

So silent, you'll wonder if it's running, Ghost allows you to move in closer than ever before with its ultra-quiet brushless motor. Fish will never hear you coming.



Fly-By-Wire Steering

Instant and smooth fly-by-wire steering control gives Ghost the feel of a traditional cable-steer motor, but without the physical cables that wear out over time.



Total Integration

Steer your boat, adjust your speed, set up route navigation or anchor at your current location with full touchscreen control from HDS LIVE, HDS Carbon and Elite Ti² displays.



Own Your Spot

Ghost's powerful and precise anchoring lets you anchor your boat on a waypoint, at your current location or anywhere on the map – regardless of wind conditions – so you can spend more time fishing and less time maintaining your position.



Configurable Foot-Pedal

Configure the Ghost pedal to suit your preferences via programmable shortcut buttons and a Flip Switch that allows the trolling motor to be driven from either side of the pedal. The foot pedal features a battery-level indicator, plus Anchor and Heading mode quick access keys. You can program the shortcut keys to quickly drop a waypoint or lower/raise your Power-Pole®.

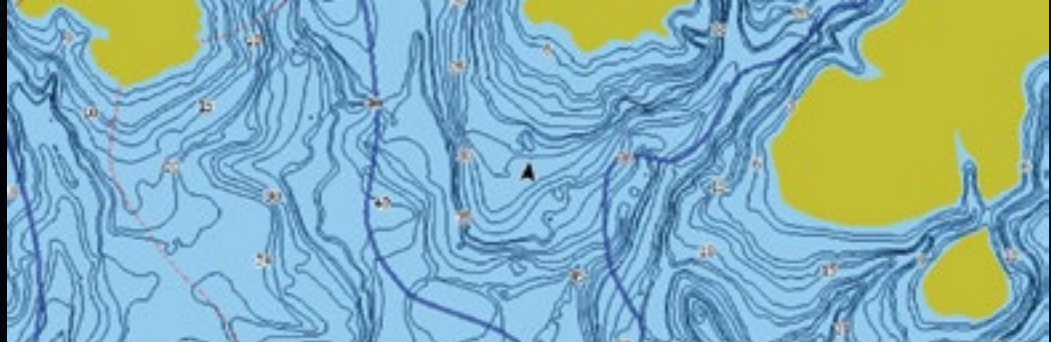
GENESIS LIVE

Mapping in real time.

Update the mapping of your favorite fishing spot or map uncharted areas – in real time – on the screen of your fishfinder/chartplotter with C-MAP Genesis Live.

Genesis Live uses digital depth from your transducer to create high-definition maps down to ½ foot contours, making it easy to find areas where fish like to hide, like drop-offs, points, and ditches.

A truly customizable mapping experience, Genesis Live gives you control over contour transparency, contour density, depth and safety shading color palettes, and more. Create your Genesis Live maps in real-time, saving them as you go to a microSD card.



Key Features

- CREATE CUSTOM MAPS WITH ½-FOOT CONTOURS IN REAL-TIME
- SAVE LIVE MAPPING DATA DIRECTLY TO ANY SD CARD
- CONTROL CONTOUR TRANSPARENCY AND CONTOUR INTERVALS
- HIGHLIGHT SPECIFIC DEPTH RANGES WITH CUSTOM DEPTH SHADING
- WORKS ON ANY WATERBODY

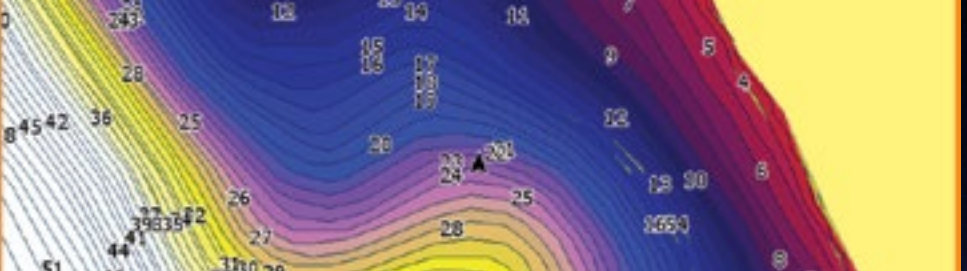
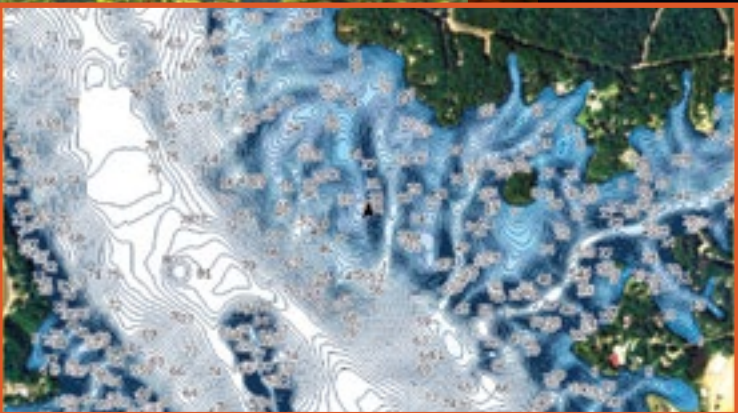
PRECISION CONTOUR HD

The Best Inland Mapping on a Single Card.

If you are an angler that is serious about refined mapping details, we have a mapping solution you are going to love. Precision Contour HD.

Whether fishing new water or your local lake, get on the fish faster with C-MAP[®] Precision Contour HD maps – the ideal fishing maps for serious anglers.

Precision Contour HD maps offer comprehensive coverage, including shallow backwaters and distant creek arms that other map cards overlook. The top fishing destinations were meticulously surveyed using innovative C-MAP Genesis technology to create the most complete maps of key fish-holding bottom structure like humps, holes, reefs, shoals, drains, ditches, ledges and break lines.



Key Features

- SURVEY QUALITY CONTOUR DATA - 1-FOOT CONTOUR COVERAGE, VISIBLE EVEN AT WIDE ZOOM LEVELS
- CUSTOM DEPTH SHADING – CHOOSE COLORS FOR SPECIFIC DEPTH RANGES TO HIGHLIGHT FISHING-HOLDING DEPTHS AND/OR HAZARD ZONES
- POINTS OF INTEREST - INCLUDES TRADITIONAL NAVIGATION INFORMATION, C-MAP NAVIGATION DATA, PLUS FISHING HOTSPOTS WAYPOINTS AND LAKES-SPECIFIC FISHING TIPS AND TECHNIQUES
- HIGH RESOLUTION SATELLITE IMAGERY – USED TO LOCATE MAN-MADE FISH-HOLDING STRUCTURE LIKE BOAT DOCKS. AVAILABLE VIEWS INCLUDE WATER AND LAND, WATER ONLY AND LAND ONLY.
- PRESET DEPTH SHADING PALETTES, INCLUDING SAFETY SHADING
- INCLUDES FISHING REGULATIONS, RECORDS AND ID PHOTOS
- FREE 1-YEAR SUBSCRIPTION TO C-MAP GENESIS EDGE CUSTOM MAPPING SERVICE.
- COMPATIBLE WITH HDS LIVE, ELITE Ti² AND HOOK REVEAL*

*DOES NOT SUPPORT SATELLITE IMAGERY OR CUSTOM DEPTH SHADING.

C-MAP[®] MAPPING UPGRADES

Lowrance fishfinder/chartplotters are compatible with a multitude of chart upgrade options to suit your mapping preferences including C-MAP, Navionics, CMOR, Trax and more.

C-MAP Insight PRO

- COVERAGE OF INLAND AND COASTAL WATERS OF THE CONTINENTAL US, ALASKA, HAWAII AND THE NORTHERN CARIBBEAN.
- HIGH DEFINITION 1-3' DEPTH CONTOURS FOR THOUSANDS OF LAKES
- FISHING HOTSPOTS POIs AND LAKE-SPECIFIC FISHING TIPS AND TECHNIQUES
- HIGH-RES COASTAL CONTOURS & NEW NAVIGATION PALETTE
- 1-YEAR UPDATES, INCLUDING THE GENESIS SOCIAL MAP VIA GoFREE SHOP, WITH REGISTRATION
- GENESIS SOCIAL MAP LAYER

C-MAP Lake Insight HD

The HD cards include all of the Pro features plus the following:

- SATELLITE IMAGERY
- SHADED RELIEF
- CUSTOM DEPTH SHADING
- C-MAP DEPTH AREA SHADING
- FISH/WATERFOWL REGULATIONS, RECORDS, ID PHOTOS
- FREE UPDATES FOR 1-YEAR, WITH REGISTRATION
- FREE! 1-YEAR SUBSCRIPTION TO GENESIS EDGE

C-MAP Genesis

C-MAP Genesis empowers you to create high-definition custom fishing maps with amazing detail and one-foot contours that show key fish-holding areas for greater success on the water.

BENEFITS OF C-MAP GENESIS™

- SUBMIT SONAR LOGS TO UPDATE MAPPING ON LAKES AND RIVERS ON THE GENESIS SOCIAL MAP.
- VIEW AND DOWNLOAD SOCIAL MAPS FOR FREE.
- CONTOUR LINES SPACED AS CLOSELY AS 1 FOOT ARE OVERLAID UPON BLUE-SHADED DEPTH SHADING
- CUSTOM DEPTH SHADING

GENESIS™ EDGE FEATURES

- UNLIMITED VIEWING AND DOWNLOADS OF PERSONAL TRIPS
- BOTTOM HARDNESS LAYER
- VEGETATION LAYER
- OPTION TO MERGE MAPS WITH SOCIAL MAP OR KEEP THEM PRIVATE



C-MAP MAX-N+



C-MAP MAX-N+ coastal charts provide accurate, up-to-date information, unique features and specialized content to enhance every day on the water.

- HIGH-RES COASTAL CONTOURS (HRB) ON COASTAL AREAS
- DYNAMIC TIDES & CURRENTS
- HIGH-RESOLUTION AERIAL PHOTOS WITH HARBOR AND APPROACH DETAILS FOR ENHANCED SITUATIONAL AWARENESS
- MARINA INFO/PORT SERVICES HELPS TRAVELING BOATERS ENJOY SAILING WORLDWIDE
- SPORT FISHING DATA (U.S. ONLY) OFFERS INFORMATION ON WRECKS/REEFS, FISH ID PHOTOS, LOCALIZED RULES/REGULATIONS, ETC.
- MARINE PROTECTED AREAS PROVIDE BOUNDARY AND DETAILED INFO ON MARINE PARKS AND OTHER AREAS
- CUSTOM DEPTH SHADING FOR EASIER IDENTIFICATION OF DIFFERENT DEPTH RANGES
- LOCAL AND WIDE COVERAGE AREAS

C-MAP MAX-N



MAX-N provides coastal cruisers with accurate C-MAP chart detail, including Depth Areas and Contours, Spot Soundings, NavAids, Light Sectors, Wrecks/Obstructions, Anchorage Areas, Small Craft Facilities and more. Available in Local and Wide coverage areas.

Navionics[®]

Navionics charts offer optional high-definition layers, including 3D, Satellite Overlay, Panoramic Port Pictures, Dynamic Tides & Current, SonarChart™ Live and much more.

SonarChart™ Live from Navionics



SonarChart Live allows you to create personal HD Bathymetry maps that display in real time while navigating. The feature can be enabled by connecting wirelessly to sonar from a mobile device that has a Navionics boating app installed, or it can be displayed directly on the screen of compatible Lowrance[®] displays.

NAVIGATION

Navigating with Lowrance has never been safer or easier – from revolutionary HALO24, HALO 20+ and HALO 20 Radar and new Link-6S and Link-9 VHF Radios to the Precision-9 compass and SmartSteer™ control of the Lowrance Outboard Pilot – you will have more control and greater situational awareness than ever.

HALO24 Radar

Key Features

- ULTRA-FAST 60 RPM OPERATION AT RANGES UP TO 1.5 NM
- 48 NM RANGE FROM A COMPACT 24-INCH DOME
- ADVANCED PULSE COMPRESSION TECHNOLOGY WITH BEAM SHARPENING
- SIMULTANEOUS DUAL RANGE OPERATION SEES BOTH NEAR AND FAR
- VELOCITYTRACK™ DOPPLER TECHNOLOGY FOR COLLISION AVOIDANCE
- EASY OPERATION WITH HARBOUR, OFFSHORE, WEATHER, AND BIRD MODES
- MARPA TARGET TRACKING (UP TO 10 TARGETS, 20 IN DUAL RANGE)
- READY INSTANTLY FROM STANDBY



HALO20+ Radar

Key Features

- ULTRA-FAST 60 RPM OPERATION AT RANGES UP TO 1.5 NM
- 36 NM RANGE FROM A COMPACT 20-INCH DOME
- ADVANCED PULSE COMPRESSION TECHNOLOGY WITH BEAM SHARPENING
- SIMULTANEOUS DUAL RANGE OPERATION SEES BOTH NEAR AND FAR
- VELOCITYTRACK DOPPLER TECHNOLOGY FOR COLLISION AVOIDANCE
- EASY OPERATION WITH HARBOUR, OFFSHORE, WEATHER, AND BIRD MODES
- MARPA TARGET TRACKING (UP TO 10 TARGETS, 20 IN DUAL RANGE)
- READY INSTANTLY FROM STANDBY



HALO20 Radar

Key Features

- 24 NM RANGE FROM A COMPACT 20-INCH DOME
- UNRIVALLED SHORT RANGE PERFORMANCE
- RADIATION SAFE
- EASY OPERATION WITH HARBOUR, OFFSHORE AND WEATHER MODE
- MARPA TARGET TRACKING
- INSTANTON™
- LOW POWER CONSUMPTION
- GUARD ZONES



Link-9

The Link-9 features an integrated GPS receiver, a removable fist mic, NMEA 2000® connectivity, a built-in dual channel AIS receiver with AIS plot functionality, dual watch, tri-watch, all-scan, more intuitive user interface, a larger LCD and a new industrial design.



LINK-6S

Communicate clearly with this dependable Class D DSC Approved marine VHF radio featuring a four-button fist microphone, intuitive rotary and keypad controls and a new front-mountable mechanical design for easy installation.



Point-1 GPS

Integrated electronic compass provides 10Hz GPS position updates plus compass heading for chart stabilization and radar overlay, plus accurate vessel heading, even at low speeds.



Precision-9

The Precision-9 Compass measures motion on nine separate axes to supply the most accurate heading and rate-of-turn information possible for Lowrance autopilot, radar and navigation systems.



NAIS 500

Reduce your risk of collision with this latest generation, fully-integrated, Class-B AIS transponder — essential for navigating today's busy shipping lanes and congested ports.



Lowrance Outboard Pilot

Lowrance autopilot packs for HDS displays provide automatic steering for cable-steer or hydraulic-steer outboard motors. Steer to a heading, waypoint or along a route with integrated SmartSteer™ control.

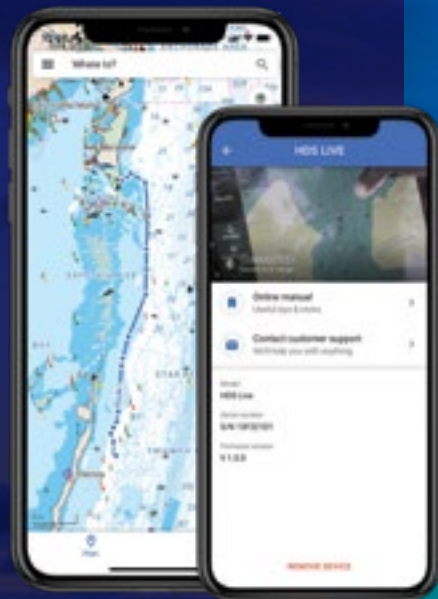


NETWORKING

Lowrance App

Whether you are on or off the water, the Lowrance App connects you to your Lowrance displays, Ghost trolling motor and other integrated electronics to help optimize performance and provide quick access to support, if you need it. Find fishing hot spots from home or on the water with our high-resolution bathymetric charts.

The Lowrance app updates on a continuous basis to make sure you have access to the most up-to-date maps and functionalities. C-MAP charts can be used free online or purchased and downloaded for use in remote areas without a connection.



BoatConnect

BoatConnect gives you peace of mind. Monitor your boat's location and battery, track trips and movement. Receive alerts if your boat leaves a designated area, and know when your battery is low. With BoatConnect you can check in on the status of your boat, track a stolen boat and ensure your battery is ready for your next outing.



Power Pole® Connectivity

You can use the built-in Bluetooth® connectivity of HDS LIVE or Elite-Ti² displays to control Power-Pole® Shallow Water anchors, equipped with the C-Monster™ Control System. Enjoy independent or simultaneous control of multiple power poles and make manual or automatic adjustments directly from your touchscreen.



SonicHub®2 Marine Audio Server

The ultimate marine audio entertainment system, the Lowrance® SonicHub®2 features integrated Bluetooth®, allowing you to stream music including Pandora® (where available) from a smartphone or tablet. The system supports AM/FM radio, playback from a USB drive or iPod and features SiriusXM® radio (US only) connectivity – all with full control from your HDS LIVE or Elite Ti² display.



WM-4 SiriusXM® Marine Audio & Weather

The new, compact WM-4 SiriusXM® Marine Audio and Weather module brings the power of an entire weather bureau to your Lowrance® HDS display with weather radar, forecasts, weather warnings and roadside fuel prices, plus up to 220 expanded audio channels — all controlled directly from your multifunction display. Fish Maps coming in 2020!



NMEA 2000®

Lowrance NMEA 2000 network devices will share and/or display user-selectable data with displays and instruments installed on a NMEA 2000 network.



Link App

Available for download on both Android and iOS platforms, the free Link app that allows users to view Lowrance® multifunction displays from a smartphone or view/control the displays from a tablet.



HDS LIVE	HDS LIVE 16	C-MAP US Enhanced Mapping with Active Imaging 3-in-1	000-14434-001
	HDS LIVE 16	C-MAP US Enhanced Mapping, No Transducer	000-14433-001
	HDS LIVE 12	C-MAP US Enhanced Mapping with Active Imaging 3-in-1	000-14428-001
	HDS LIVE 12	C-MAP US Enhanced Mapping, No Transducer	000-14427-001
	HDS LIVE 9	C-MAP US Enhanced Mapping with Active Imaging 3-in-1	000-14422-001
	HDS LIVE 9	C-MAP US Enhanced Mapping, No Transducer	000-14421-001
	HDS LIVE 7	C-MAP US Enhanced Mapping with Active Imaging 3-in-1	000-14416-001
	HDS LIVE 7	C-MAP US Enhanced Mapping, No Transducer	000-14415-001
	LR-1 Remote	LR-1 Remote Control for HDS LIVE Displays	000-14505-001

ELITE Ti²	Elite-12 Ti²	C-MAP US Inland Mapping with Active Imaging 3-in-1	000-14658-001
	Elite-12 Ti²	C-MAP US Inland Mapping, No Transducer	000-14653-001
	Elite-12 Ti²	C-MAP US Inland Mapping with Med-High + Active Imaging transducers	000-14662-001
	Elite-12 Ti²	Navionics+ US/Canada Mapping with Active Imaging 3-in-1	000-14659-001
	Elite-9 Ti²	C-MAP US Inland Mapping, No Transducer	000-14643-001
	Elite-9 Ti	C-MAP US Inland Mapping with Active Imaging 3-in-1	000-14648-001
	Elite-9 Ti²	C-MAP US Inland Mapping with Med-High + Active Imaging transducers	000-14652-001
	Elite-9 Ti²	Navionics+ US/Canada Mapping with Active Imaging 3-in-1	000-14649-001
	Elite-7 Ti²	C-MAP US Inland Mapping, No Transducer	000-14629-001
	Elite-7 Ti²	C-MAP US Inland Mapping with Active Imaging 3-in-1	000-14638-001
	Elite-7 Ti²	C-MAP US Inland Mapping with Med-High + Active Imaging transducers	000-14642-001
	Elite-7 Ti²	C-MAP US Inland with HDI Transducer	000-14634-001
	Elite-7 Ti²	Navionics+ US/Canada Mapping with Active Imaging 3-in-1	000-14639-001
	Elite-7 Ti²	Navionics+ US/Canada Mapping with HDI transducer	000-14635-001

HOOK REVEAL	TRIPLESHOT	HOOK REVEAL 9 TripleShot	C-MAP US Inland Mapping with High CHIRP/SideScan/DownScan	000-15526-001
		HOOK REVEAL 9 TripleShot	Navionics+ US/Canada Mapping with High CHIRP/SideScan/DownScan	000-15535-001
		HOOK REVEAL 7 TripleShot	C-MAP US Inland Mapping with High CHIRP/SideScan/DownScan	000-15513-001
		HOOK REVEAL 7 TripleShot	Navionics+ US/Canada Mapping with High CHIRP/SideScan/DownScan	000-15524-001
		HOOK REVEAL 7x GPS TripleShot	GPS Plotter with High CHIRP/SideScan/DownScan	000-15515-001
	SPLITSHOT	HOOK REVEAL 5 TripleShot	C-MAP US Inland Mapping with High CHIRP/SideScan/DownScan	000-15501-001
		HOOK REVEAL 5 TripleShot	Navionics+ US/Canada Mapping with High CHIRP/SideScan/DownScan	000-15511-001
		HOOK REVEAL 9 Splitshot	C-MAP US Inland Mapping with High CHIRP/DownScan	000-15525-001
		HOOK REVEAL 9 Splitshot	Navionics+ US/Canada Mapping with High CHIRP/DownScan	000-15534-001
		HOOK REVEAL 7 SplitShot	C-MAP US Inland Mapping with High CHIRP/DownScan	000-15512-001
		HOOK REVEAL 7 SplitShot	Navionics+ US/Canada Mapping with High CHIRP/DownScan	000-15523-001
		HOOK REVEAL 7x GPS SplitShot	GPS Plotter with 200 kHz/DownScan	000-15514-001
		HOOK REVEAL 5 SplitShot	C-MAP US Inland Mapping with High CHIRP/DownScan	000-15500-001
		HOOK REVEAL 5 SplitShot	Navionics+ US/Canada Mapping with High CHIRP/DownScan	000-15510-001
		HOOK REVEAL 5x GPS SplitShot	GPS Plotter with 200 kHz/DownScan	000-15503-001
	BULLET	HOOK² 4x GPS Bullet	GPS Plotter with 200 kHz	000-14014-001
		HOOK² 4x Bullet	200 kHz	000-14012-001

ICE MACHINES		
HOOK Reveal 7 Ice Machine	C-MAP US Inland with Ice Transducer	000-15542-001
Portable Power Pack	Portable Power Pack with Ice Transducer	000-15111-001
HOOK Reveal 5 Ice Machine	C-MAP US Inland Mapping with Ice Transducer	000-15541-001
HOOK² 4x GPS All-Season Pack	GPS Plotter with 200 kHz Transducer	000-14179-001
HOOK² 4x All-Season Pack	200 kHz Transducer	000-14178-001

CASTABLES		
FishHunter Pro	381 kHz/475 kHz/675 kHz	000-14239-001
FishHunter 3D	381 kHz/475 kHz/675 kHz	000-14240-001

GHOST TROLLING MOTOR		
Ghost Trolling Motor	Freshwater 47" Trolling Motor	000-14937-001

NMEA 2000 NETWORK SENSORS		
Fluid Level	NMEA 2000 Fluid Level Sensor	000-11518-001
Fuel Flow	NMEA 2000 Fuel Flow Sensor	000-11517-001
Fuel Data	NMEA 2000 Fuel Data Manager	000-11522-001
Pressure Sensor	NMEA 2000 Pressure Sensor	000-11523-001
Temp Sensor	NMEA 2000 Temperature Sensor	000-11520-001
Thru-Hull Temp	NMEA 2000 Thru-Hull Temperature Sensor	000-11521-001
Speed Sensor	NMEA 2000 Paddlewheel Speed Sensor	000-11519-001

WEATHER AND AUDIO		
WM-4	WM-3 SiriusXM Marine Weather Module	000-14970-001
SonicHub2	SonicHub2 Marine Audio Server + Lowrance speakers	000-12301-001
SonicHub2 Module	SonicHub2 Marine Audio Server - Module Only	000-12302-001
Speaker Pack	Lowrance 6.5" Marine Speakers	000-12304-001

NAVIGATION		
HALO24 Radar	Pulse Compression Radar	000-14541-001
HALO20+ Radar	Pulse Compression Radar	000-14542-001
HALO20 Radar	Pulse Compression Radar	000-14543-001
Precision-9 Compass	Precision-9 Solid State Compass	000-12607-001
NAIS-500	NAIS-500 System—Class B AIS with NPSL-500, GPS-500 Antenna	000-13963-001
Point-1 Antenna	Point-1 Heading and GPS Sensor	000-11047-001
Outboard Pilot Hydraulic Pack	Lowrance Outboard Pilot Hydraulic Pack	000-11748-001
Outboard Pilot Cablesteer Pack	Lowrance Outboard Pilot Cablesteer Pack	000-11749-001

MOUNTING ACCESSORIES

Kayak Kit

Portable Kayak Kit

000-12292-001

MAPPING

C-MAP

Insight Pro

M-NA-Y070-MS

C-MAP

Lake Insight HD — West US

M-NA-Y071-MS

C-MAP

Lake Insight HD — Northeast US

M-NA-Y073-MS

C-MAP

Lake Insight HD — Southeast US

M-NA-Y074-MS

C-MAP

Lake Insight HD — North Central US

M-NA-Y072-MS

C-MAP

Lake Insight HD — South Central US

M-NA-Y075-MS

Precision Contour HD

Alabama

M-NA-Y334-MS

Precision Contour HD

Tennessee

M-NA-Y901-MS

Precision Contour HD

North Carolina

M-NA-Y704-MS

Precision Contour HD

Georgia - Coming Soon!

M-NA-Y404-MS

Precision Contour HD

South Carolina - Coming Soon!

M-NA-Y803-MS

COMMUNICATION

Link-9 VHF

Link-9 Class D DSC VHF Radio

000-14472-001

Link-6S VHF

Link-6S Class D DSC VHF Radio

000-14493-001

Link-2 VHF

Link-2 DSC VHF HandHeld Radio

000-10782-001

TRANSDUCERS—TRANSOM MOUNT

Transducer

Tilt

Frequency

Compatible Units

Connector

Part Number

Active Imaging 3-in-1

—

Med/High/CHIRP/SideScan/DownScan

HDS LIVE, HDS Carbon, Elite Ti²

9-Pin

000-14489-001

Active Imaging 3-in-1 (6-foot cable)

—

Med/High/CHIRP/SideScan/DownScan

HDS LIVE, HDS Carbon, Elite Ti²

9-Pin

000-14814-001

Active Imaging 2-in-1

—

SideScan/DownScan

HDS LIVE, HDS Carbon, Elite Ti²

9-Pin

000-14490-001

LiveSight

—

LiveSight Transducer with Mounts - Coming Soon!

HDS LIVE, HDS Carbon (Carbon Requires PSI-1)

9-Pin

000-14458-001

LiveSight PSI-1

—

Performance Sonar Interface - Coming Soon!

HDS Carbon

—

000-14899-001

High Speed Skimmer

—

Med/High CHIRP

HDS LIVE, HDS Carbon, Elite-Ti², Elite Ti, HOOK² 12/7/5*

9-Pin

000-14884-001

High Speed Skimmer

—

Low/High CHIRP

HDS LIVE, HDS Carbon, Elite-Ti², Elite Ti, HOOK² 12/7/5*

9-Pin

000-14885-001

HDI Skimmer (Lowrance Blue)

—

Med/High CHIRP/DownScan

HDS LIVE, HDS Carbon, Elite-Ti², Elite Ti, HOOK² 12/7/5*

9-Pin xSonic

000-12570-001

HDI Skimmer

—

Low/High CHIRP/DownScan

HDS LIVE, HDS Carbon, Elite-Ti², Elite Ti, HOOK² 12/7/5*

9-Pin xSonic

000-12569-001

StructureScan 3D

—

3D/Sidescan/DownScan

HDS LIVE, HDS Carbon

Dual 12-Pin

000-12395-001

Bullet Skimmer

—

200 kHz

HOOK² 4x Bullet

6-Pin

000-14027-001

SplitShot

—

High CHIRP/DownScan

HOOK² SplitShot Displays

8-Pin

000-14028-001

TripleShot

—

High CHIRP/SideScan/DownScan

HOOK² TripleShot Displays

8-Pin

000-14029-001

*Requires Adaptor Cable

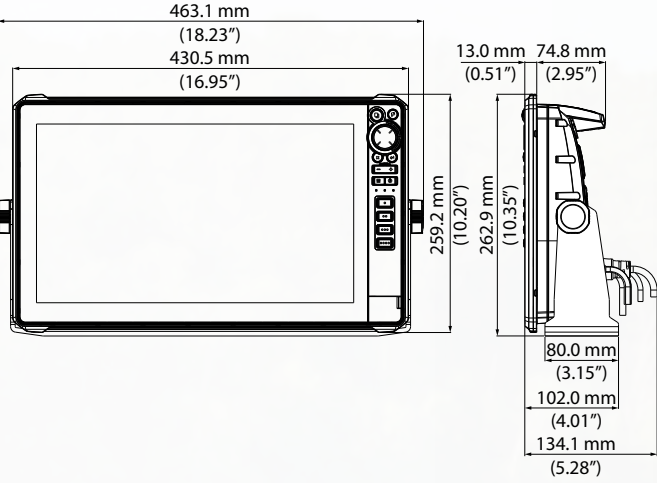
TRANSDUCERS—THRU HULL					
Transducer	Tilt	Frequency	Compatible Units	Connector	Part Number
LiveSight	—	LiveSight Down Thru-Hull	HDS LIVE, HDS Carbon (Carbon Requires PSI-1)	9-Pin	000-14897-001
StructureScan 3D (Stainless steel, single)	—	3D/SideScan/DownScan	HDS LIVE, HDS Carbon	Dual 12-Pin	000-13559-001
StructureScan 3D (Stainless steel, pair)	—	3D/SideScan/DownScan	HDS LIVE, HDS Carbon	Dual 12-Pin	000-13560-001
StructureScan HD (Plastic, single)	—	SideScan/DownScan	HDS LIVE, HDS Carbon	9-Pin	000-11029-001
StructureScan HD (Stainless steel, single)	—	SideScan/DownScan	HDS LIVE, HDS Carbon	9-Pin	000-11459-001
StructureScan HD (Stainless steel, pair)	—	SideScan/DownScan	HDS LIVE, HDS Carbon	9-Pin	000-11460-001
StructureScan 3D (Stainless steel, single)	—	Low/High CHIRP/3D/SideScan/DownScan	HDS LIVE*, HDS Carbon	Dual 12-Pin, 7-Pin	000-14254-001
StructureScan 3D (Stainless steel, single)	—	Med/High CHIRP/3D/SideScan/DownScan	HDS LIVE*, HDS Carbon	Dual 12-Pin, 7-Pin	000-14255-001
TotalScan (Stainless steel, single)	—	Low/High CHIRP/SideScan/DownScan	HDS LIVE, HDS Carbon, Elite Ti ² , Elite Ti	9-Pin	000-14259-001
TotalScan (Stainless steel, single)	—	Med/High CHIRP SideScan/DownScan	HDS LIVE, HDS Carbon, Elite Ti ² , Elite Ti	9-Pin	000-14257-001
Bronze HDI	0	Low/High CHIRP/DownScan	HDS LIVE, HDS Carbon, Elite Ti ² , Elite Ti	9-Pin	000-13905-001
	12	Low/High CHIRP/DownScan	HDS LIVE, HDS Carbon, Elite Ti ² , Elite Ti	9-Pin	000-13906-001
	20	Low/High CHIRP/DownScan	HDS LIVE, HDS Carbon, Elite Ti ² , Elite Ti	9-Pin	000-13907-001
*Requires Adaptor Cable					

TRANSDUCERS—TROLLING MOTOR/SHOOT-THRU HULL					
Transducer	Tilt	Frequency	Compatible Units	Connector	Part Number
Pod Shoot-Thru (No Temp)	—	Med/High CHIRP	HDS LIVE, HDS Carbon, Elite-Ti ² , Elite Ti, HOOK ² 12/7/5*	9-Pin	000-14886-001
Pod - Trolling Motor**	—	Med/High CHIRP	HDS LIVE, HDS Carbon, Elite-Ti ² , Elite Ti, HOOK ² 12/7/5*	9-Pin	000-14888-001
Pod Shoot-Thru (Remote Temp)	—	Med/High CHIRP	HDS LIVE, HDS Carbon, Elite-Ti ² , Elite Ti, HOOK ² 12/7/5*	9-Pin	000-14887-001
*Requires Adaptor Cable, **Trolling Motor Mount Only					

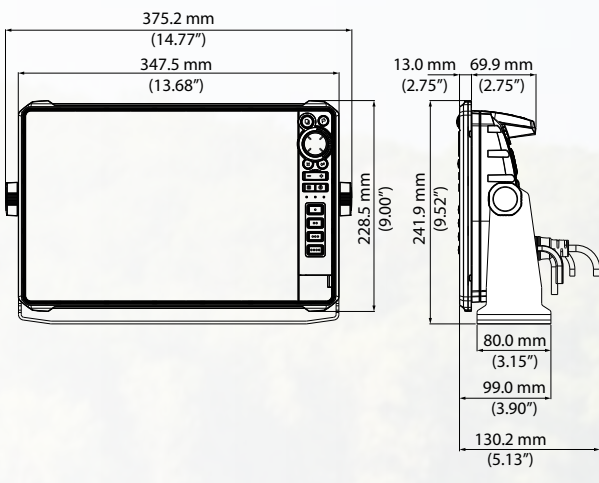
ADAPTOR CABLES		
7-to-9 Pin Adaptor	Connects 7-Pin transducers to displays with 9-Pin connectors (HDS LIVE/Carbon/Elite Ti ² , Elite Ti)	000-13313-001
7-Pin HOOK ² Adaptor	Connects 7-Pin transducers to HOOK ² 5/7/9/12	000-14068-001
9-Pin HOOK ² Adaptor	Connect 9-Pin xSonic transducers to HOOK ² 5/7/9/12	000-14069-001
9-Pin Black to 7-Pin Blue	Connects 9-Pin transducers to displays with 7-Pin blue connectors	000-13977-001
7-Pin to HOOK ² 4x Adaptor	Connects 7-Pin transducers to HOOK ² 4x displays	000-14070-001

HDS LIVE Dimensions

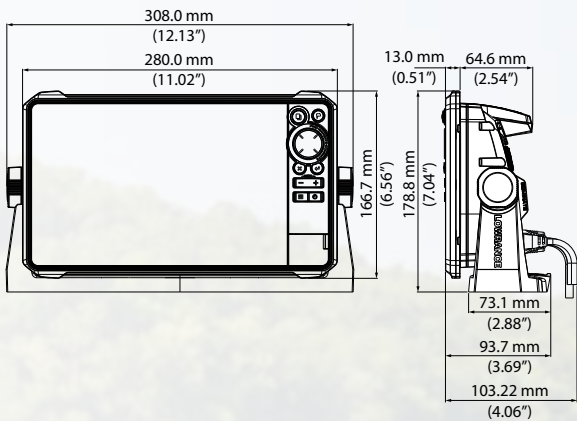
HDS LIVE 16



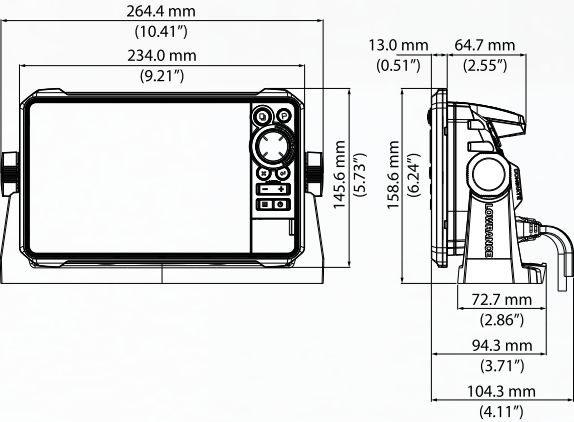
HDS LIVE 12



HDS LIVE 9

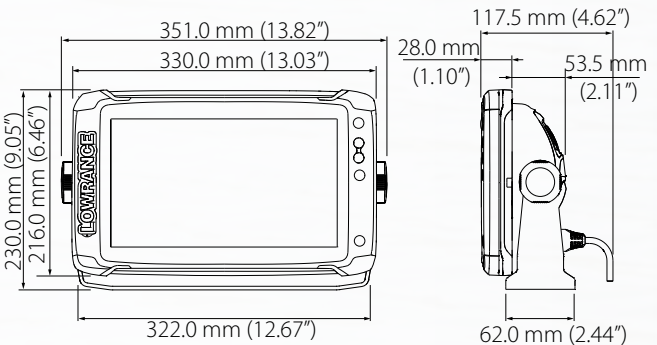


HDS LIVE 7

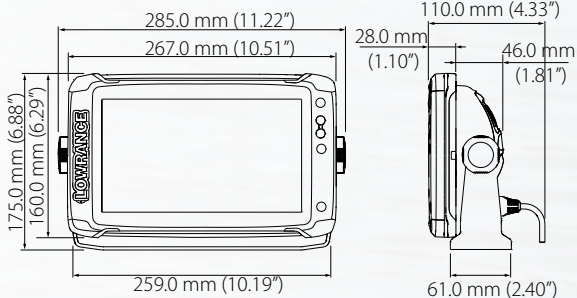


ELITE Ti² Dimensions

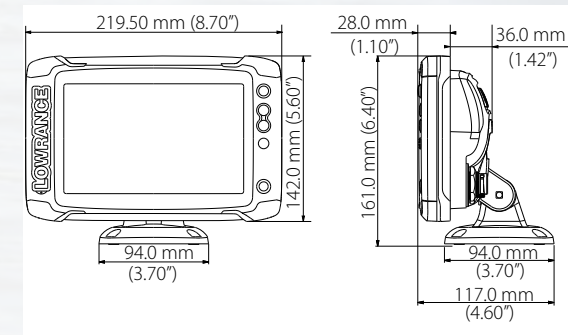
ELITE-12 Ti²



ELITE-9 Ti²

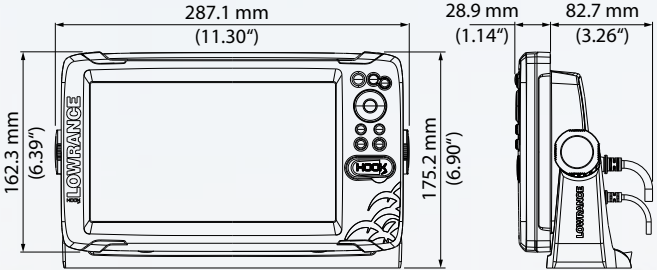


ELITE-7 Ti²

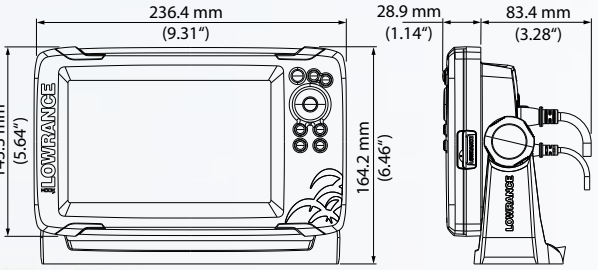


HOOK REVEAL Dimensions

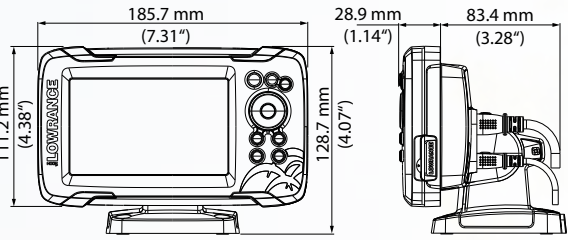
HOOK REVEAL 9



HOOK REVEAL 7

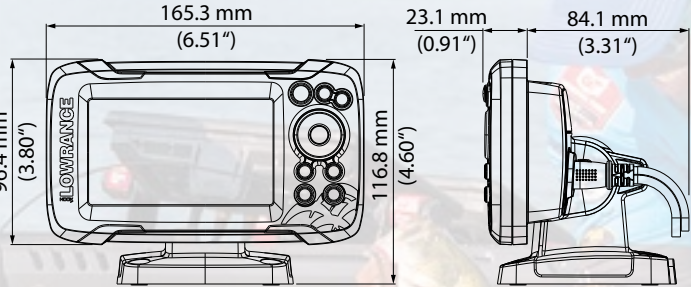


HOOK REVEAL 5



HOOK² Dimensions

HOOK² 4X





LOWRANCE
AMERICA'S **NUMBER ONE** FISHFINDING BRAND.

Telephone: 1.800.628.4487
www.lowrance.com

Products, features and specifications subject to change without notice.
©2019 Navico® 985-12248-001

**Number 1 claim based on more professional anglers using Lowrance than all other brands combined.*

 facebook.com/lowrance  twitter.com/lowrancefishing  youtube.com/user/lowrance  instagram.com/lowrancefishing