



COMMERCIAL & EMERGENCY SERVICES







CONTENTS

DRYSUITS

WOSS (WATER OPERATIONS SAFETY SUIT)	04
SOLAS WOSS (WATER OPERATIONS SAFETY SUIT)	10
WINDFARM	14
DEFRA SEARCH & RESCUE	18
TRAINING SCHOOLS	24
ABANDONMENT SUITS	30

ALL WEATHER GEAR	34
UNDERSUITS	44
LUGGAGE	46
ACCESSORIES	48
FOOTWEAR	50
FABRIC	52
PERSONALISATION	54
SIZE CHARTS	55
WARRANTY	56
SPARES	57

Industry key

Each icon represents an industry that our drysuits are specifically designed and tested for to ensure optimal performance and protection in diverse professional environments.



BLUE LIGHT
SERVICES



SEARCH &
RESCUE



OFFSHORE



CONSTRUCTION
& INDUSTRY



WORKBOATS,
VESSELS &
FISHERIES



SAFETY
BOATS



TRAINING
CENTRES

WOSS

(WATER OPERATIONS
SAFETY SUIT)



A person wearing a yellow helmet, a red and yellow drysuit, and a life vest is standing in a river, pulling on several orange ropes. The river has a rocky, mossy bank on the left and a large rock on the right. The water is turbulent. The background shows more rocks and some bare trees. The overall tone is orange and yellow.

DRYSUITS

High-performing drysuits designed for marine professionals operating in dynamic environments. Engineered for comfort and durability, the suits ensure protection during extended use in demanding conditions.

Versatile and adaptable, they meet the needs of rescue organisations, commercial water operations and other critical maritime applications.

BREATHABLE WOSS

Features

- Waterproof & durable, with breathable top
- BDM® zip front entry system
- Reflective tape
- Internal braces
- Elasticated waist
- PU knee & seat
- Reinforced trouser seams with rubber taped inner leg seams

Approvals

- UKCA/CE mark
- PPE Cat I with testing from EN343:2003 & EN14225-2:2017

Upper material

Breathable nylon tri-laminate with microporous coating (225gm/mt²)

Trouser material

Clotex polyester tri-laminate with butyl rubber inter-ply (385gm/mt²)

Sizes

S / SM / M / MB / LM / L / LB / XL / XXL / XXXL / MTM

Women's sizes

S / SM / M / LM / L / SR / LR / MTM

▲ ▼ Yellow / Black

SKU

120111 STC boots
120140 Latex socks
120156 Fabric socks
120180 Women's fit



Footwear options

S5 Classified Full Safety Boot IAW
EN ISO 20345:2011
Fabric socks
Latex socks

Pocket options

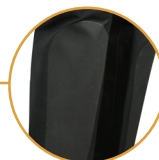
Flat pockets as standard
Bellow pockets optional

Neck & cuff seal options

Glideskin seals as standard
Latex seals optional

Branding

Personalisation available on request



PU Fused,
seamless
knee & seat
reinforcement



Latex socks,
fabric socks
& STC boots





PATROLMANS WOSS

Features

- Waterproof & durable, with breathable top
- BDM® zip front entry system
- Rubber tape trouser legs
- Internal braces
- Elasticated waist
- PU reinforced seat & knee pads
- Rubber crotch patch for reinforcement

Approvals

- UKCA/CE mark
- PPE Cat I with testing from EN343:2003 & EN14225-2:2017

Upper material

Breathable nylon tri-laminate with microporous coating (225gm/mt²)

Trouser material

Clotex polyester tri-laminate with butyl rubber inter-ply (385gm/mt²)

Sizes

XS / S / SM / M / MB / LM / L / LB / XL / XXL / XXXL / MTM

▲▼ **Black**

SKU

120102 STC boots

Footwear options

S5 Classified Full Safety Boot IAW EN ISO 20345:2011 as standard

Other footwear options available on request

Neck & cuff seal options

Latex seals

Glideskin seals





HEAVY DUTY PATROLMANS WOSS

Features

- Waterproof & durable, with breathable top
- YKK® Aquaseal zip front entry system
- Flat thigh pockets on both legs, with drainage
- Reflective tape
- Internal braces
- Elasticated waist
- PU knee & seat
- Reinforced trouser seams
- Offset crotch panel
- Glideskin neck & cuff seals

Approvals

- UKCA/CE mark
- PPE Cat I with testing from EN343:2003 & EN14225-2:2017

Upper material

Breathable nylon tri-laminate with microporous coating (225gm/mt²)

Trouser material

Texturised polyester twill tri-laminate with butyl rubber inter-ply (480gm/mt²)

Sizes

S / SM / M / MB / LM / L / LB / XL / XXL

▲ Navy / Black

SKU

120175

Pocket options

Flat pockets

Footwear options

Fabric socks

Branding

Personalisation available on request



SOLAS WOSS

(WATER OPERATIONS
SAFETY SUIT)





DRYSUITS

A high-performance, non-insulated immersion drysuit engineered for professional use in extreme offshore environments. Certified to meet the Marine Equipment Directive (MED) requirements, it provides essential protection against cold-water exposure, ensuring safety in critical marine and offshore oil and gas environments.

Constructed for extended wear, it ensures durability, flexibility and comfort for professionals operating in challenging offshore settings. Ideal for fast rescue craft operatives, it offers unrestricted mobility without compromising safety.

SOLAS WOSS

Features

- Waterproof & durable, with breathable top
- BDM® zip front entry system
- Integrated, hi-vis 3mm neoprene thermal hood
- 3mm neoprene mitts attached to sleeve
- IMO SOLAS reflective tape
- Internal braces
- Elasticated waist
- PU reinforced seat & knee pads
- Reinforced trouser seams
- Latex cuff seals

Approvals

- Marine Equipment Directive (MED) SOLAS & Red Ensign Approval - Uninsulated Immersion Suit
- UKCA/CE Mark
- PPE Cat I Regulation (EU)/2016/42517 with testing from EN343:2003 & EN14225-2:2017

Upper material

Breathable nylon tri-laminate with microporous coating (225gm/mt²)

Trouser material

Clotex polyester tri-laminate with butyl rubber inter-ply (385gm/mt²)

Sizes

S / SM / M / MB / LM / L / LB / XL / XXL

▲ ▼ Yellow / Black

SKU

120153 Fabric socks
120153-TH Thermic boots

Footwear options

Thermic boots
Fabric socks

Pocket options

Flat pockets as standard





WINDFARM



DRYSUITS



Specifically designed for offshore wind technicians, this immersion drysuit meets all the demands of crew transfers and walk-to-work platform-to-turbine transitions.

Certified to meet the Marine Equipment Directive (MED) requirements, it adheres to the highest industry standards for safety and reliability. Engineered for comfort, the suit is lightweight, waterproof and fully breathable, ensuring maximum protection in demanding offshore environments.

SOLAS WINDGUARD WOSS



Features

- Waterproof & fully breathable
- YKK® Aquaseal zip front entry system, with T-bar puller for easy donning whilst wearing gloves
- Glideskin neoprene neck & cuff seals with external liquid seal
- Cuff covers
- Fleece lined fabric collar with fit adjustment
- Knee, seat & elbow reinforcements
- Back elastic & internal braces
- IMO SOLAS retro-reflective tape at cuffs, shoulders & hood
- Reflective tapes & branding
- Glove pockets at elbows with 3mm neoprene gloves attached with cord
- Harness compatible thigh pocket, with mesh drainage
- 3mm neoprene hi-vis yellow hood stored in back collar pocket
- ID window pockets on elbow pockets

Pocket options

Bellows pockets

Branding

Personalisation available on request



Approvals

- Marine Equipment Directive (MED) SOLAS & Red Ensign Approval - Uninsulated Immersion Suit
- UKCA/CE Mark
- PPE Cat I Regulation (EU)/2016/42517 with testing from EN343:2003 & EN14225-2:2017

Material

Breathable nylon tri-laminate with microporous coating (225gm/mt²)

Sizes

S / M / L / XL / XXL / MB

▲ ▼ Yellow / Black

SKU

130624





DEFRA SEARCH & RESCUE





DRYSUITS

Engineered to meet the stringent requirements of the DEFRA Flood Rescue Concept of Operations, the drysuits in this range are purpose-built for elite water rescue teams operating in high-risk flood and swiftwater environments.

Designed for multi-agency response, our drysuits are trusted by firefighting units, emergency medical services, search and rescue teams, and disaster relief organisations. Built for durability, flexibility, and comfort, they enable professionals to perform critical, life-saving operations while ensuring maximum protection in hazardous environments.

The MOD 2 / MOD 3 & 4 drysuits in this range are engineered to meet the stringent requirements of the DEFRA Flood Rescue Concept of Operations. Purpose built for elite water rescue teams operating in high-risk flood and swift water environments.

DEFRA SPECIFICATION

MODULE 2 RESCUE

(MOD 2 DRYsuit)

Features

- Waterproof & durable with a breathable top
- YKK® Aquaseal zip front entry system & convenience zip (male & female convenience zip placements)
- T-Bar puller on zips for easy donning
- Internal braces
- Elasticated waist
- Fused PU reinforcements on knee & seat
- Double taped trousers for durability
- Glideskin neck & cuff seals
- Ankle & cuff adjustable covers
- Retro-reflective tape on cuff, ankle & thigh pocket

Approvals

- UKCA/CE mark
- PPE Cat I with testing from EN343:2003 & EN14225-2:2017

Upper material

Breathable nylon tri-laminate with microporous coating (225gm/mt²)

Trouser material

Clotex polyester tri-laminate with butyl rubber inter-ply (385gm/mt²)

Men's sizes

S / M / LM / L / XL / XXL / XXXL / MB / MTM

Women's sizes

S / SM / M / LM / L / SR / LR / MTM

▲ ▼ Yellow / Black

SKU

Mens:

120201 Latex Socks
120202 Fabric Socks

Womens:

120205 Latex Socks
120206 Fabric Socks



Pocket options

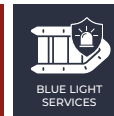
Thigh bellow pocket with mesh drainage panel

Footwear options

Latex socks
Fabric socks

Branding

Personalisation available on request



Lightweight & breathable top



DEFRA SPECIFICATION MODULE 3 & 4 RESCUE (MOD 3 & 4 DRYsuit)

Features

- Waterproof & durable
- YKK® Aquaseal zip front entry system & convenience zip (male & female convenience zip placements)
- T-Bar puller on zips for easy donning
- Internal braces
- Elasticated waist
- Glideskin neck & cuff seals
- Fused PU reinforcements on knee & seat, with neoprene knee padding
- Double taped trousers for durability
- Ankle & cuff adjustable covers
- Photoluminescent encapsulated superior grade reflective tape on cuff, ankle & thigh pocket

Approvals

- UKCA/CE mark
- PPE Cat I with testing from EN343:2003 & EN14225-2:2017

Material

Clotex polyester tri-laminate with butyl rubber inter-ply (385gm/mt²)

Men's sizes

S / M / LM / L / XL / XXL / XXXL / MB / MTM

Women's sizes

S / SM / M / LM / L / SR / LR / MTMM

▲▼ Red / Black

SKU

Mens:

120210 Latex Socks
120211 Fabric Socks

Womens:

120215 Latex Socks
120216 Fabric Socks



Pocket options

Thigh bellow pocket with mesh drainage panel

Footwear options

Latex socks
Fabric socks

Branding

Personalisation available on request



INSHORE HEAVY DUTY RESCUE DRYsuit



Features

- Waterproof & durable
- Abrasion resistance materials
- YKK® Aquaseal zip front entry system
- Reflective tape at cuff cover
- Internal braces
- Elasticated waist
- PU knee & seat
- Reinforced trouser seams
- Offset crotch panel
- Glideskin neck & cuff seal

Pocket options

Flat pockets as standard

Footwear options

ISO STC Mid Sole Protect Boot
S5 yellow

Branding

Personalisation available on request

Approvals

- UKCA/CE mark
- PPE Cat I with testing from EN14225-2:2017

Top material

N100N high-tenacity nylon laminate with butyl rubber inter-ply (240gm/mt²)

Trouser material

Texturised polyester twill tri-laminate with butyl rubber inter-ply (480gm/mt²)

Sizes

S / M / MB / L / LB / XL / XXL / MTM

▲ ▼ Yellow / Black

SKU

120170



HEAVY DUTY RESCUE DRYSUIT

Features

- Waterproof & durable
- BDM® zip front entry system
- Reflective tape
- Internal braces
- Elasticated waist
- Neoprene padded knees
- Cordura® nylon acrylic reinforced knees, seat & elbows
- Double heat taped seams
- Neoprene neck & cuff seals
- Rescue logo to back

Approvals

- UKCA/CE mark
- PPE Cat I with testing from EN14225-2:2017

Material

Texturised polyester twill tri-laminate with butyl rubber inter-ply (480gm/mt²)

Sizes

S / M / LM / L / XL / XXL / MTM

▲ Orange

SKU

130212

Footwear options

5 Classified Full Safety Boot IAW EN ISO 20345:2011

Fabric socks

Latex socks



Double heat taped seams



Cordura reinforced knees, seat & elbows



TRAINING SCHOOLS





DRYSUITS

A range of drysuits designed for use in swimming pools and offshore training schools.

The materials used ensure longevity in chlorinated water and have a range of features to represent situations in marine environments.

TRANSIT

TRAINING SUIT 1

Features

- Waterproof & breathable
- BDM® zip front entry system
- Internal braces
- Elasticated waist
- Neck & cuff seals

Approvals

- UKCA/CE mark
- PPE cat I with testing from EN343:2003 & EN14225-2:2017

Material

Breathable nylon tri-laminate with microporous coating (225gm/mt²)

Sizes

S / M / L / XL / XXL / XXXL

▲▼ Yellow / Black

SKU

130213

Footwear options

Fabric socks



Entry level



Fully breathable



TRANSIT

TRAINING SUIT 2

Features

- Waterproof & breathable
- BDM® zip front entry system
- Internal braces
- Elasticated waist
- Hi-vis 3mm neoprene hood with reflector
- Neck & cuff seals
- Stowaway glove pockets & 3mm neoprene gloves
- Apeks fitted auto-relief valves
- Grab handles across back for in-water recovery

Approvals

- UKCA/CE mark
- PPE cat I with testing from EN343:2003 & EN14225-2:2017

Material

Breathable nylon tri-laminate with microporous coating (225gm/mt²)

Sizes

S / M / L / XL / XXL / XXXL

▲ ▼ Yellow / Black

SKU

130251

Pocket options

Box pockets with protective flap

Footwear options

Fabric socks



TRANSIT

TRAINING SUIT 3

Features

- Durable & waterproof
- BDM® zip front entry system
- Internal braces
- Elasticated waist
- Double heat tape seams
- Fitted auto-relief valves
- Grab panel across back for in-water recovery
- Stowaway glove pockets
- Glideskin neck & double layer cuff seals

Approvals

- UKCA/ CE mark
- PPE cat I with testing from EN14225-2:2017

Material

Clotex polyester tri-laminate with butyl rubber inter-ply (385gm/mt²)

Sizes

S / M / L / XL / XXL / XXXL

▲▼ Black ▲▼ Yellow ▲▼ Black / Yellow

SKU

Black	130286-BLACK
Yellow	130286
Black/yellow	130286-YB

Pocket options

Box pockets with protective flap

Footwear options

Fabric socks





ABANDONMENT SUITS



DRYSUITS



The Intrepid MK8 non-insulated immersion suit has been designed as an easy don, lightweight immersion suit.

It is manufactured using tough polyurethane coated nylon fabric and the high visibility colour greatly improves survivor location, especially in low light conditions.

The Intrepid MK8 is designed to give a generous fit and is available in two sizes, universal and extra large, which will accommodate a wide range of personnel. When packed in its valise, it is extremely compact and can be stowed easily for emergency situations.

INTREPID MK8

IMMERSION SUIT

Features

- Easy don with offset zip through face seal
- 3mm hi-vis yellow hood with 5mm glideskin lined full face seal
- High visibility colour
- Waterproof zip with red toggle puller for quick identification & easy pulling when wearing gloves
- Integral five finger gloves with 2.5mm double lined neoprene mitts attached to a lanyard
- IMO SOLAS Reflexite tape at cuffs & hood
- Hook & loop ankle & wrist straps for secure fitting & improved range of movement when donned

Approvals

- Marine Equipment Directive (SOLAS EU) & (RED ENSIGN UK) Uninsulated Immersion Suit

Material

PU Coated nylon with water resistant finish (155 GM/M²)

Sizes

Universal (65-95KG)
XL (95KG+)

 **Red**

SKU

Universal (65-95KG) 31-ISP-MK8UNI-001
XL (95KG+) 31-ISP-MK8XL-001

Valise dimensions

40cm x 23cm

Packed weight

1kg

Service Interval

3 year (annually after 10 years)

Valise

Universal - Yellow valise
XL - Red valise



Different colour bags to allow for quick size identification

Lightweight & small capacity packaging for easy stowage on-board



Neoprene mitts on lanyard



ALL WEATHER GEAR





CLOTHING

Engineered for ultimate protection in marine environments, our range of all-weather jackets and trousers are designed to keep professionals dry, comfortable and fully mobile in extreme conditions. Utilising advanced waterproof, breathable fabrics and reinforced for durability, each garment delivers superior resistance to wind, rain, and sea spray.

Wear alone or as a layering system for offshore, coastal and marine operations. Our jackets provide high-visibility safety features, ergonomic fits, and stormproof closures, while our trousers offer unrestricted movement and enhanced abrasion resistance.

COXSWAIN SUIT

Features

Smock top:

- Fully waterproof & breathable
- Fully taped seam construction
- Glideskin neck & cuff seals
- Adjustable cuff covers
- Bungee cord waist adjustment
- Sleeve pockets

Trousers:

- Adjustable braces with quick release buckle system
- Bungee cord chest adjustment
- Elasticated back waist
- Convenience zip
- Cordura® overlay at knee & seat
- Lower leg zips with storm flap
- Adjustable ankle cover



Approvals

- UKCA/CE mark
- PPE Cat I tested to EN343:2003

Material

Breathable nylon tri-laminate with microporous coating (225gm/mt²)

Sizes

S / M / L / XL / XXL

▲▼ **Black**

SKU

278430-BLACK





TX-3+ OFFSHORE JACKET



Features

- TX-3+ DWR coated, 3-layer nylon material with Tactel® yarns for durability & flexibility
- Waterproof, windproof & breathable
- Fully taped seam construction
- Cordura® reinforced panels for abrasion resistance
- 2-way zip protected by double stormflap & drainage channel
- Self-draining large bellow pockets with keyclip
- PU adjustable cuff seals with outer cuff cover to reduce water influx
- Ergonomic hi-vis hood & face mask
- Articulated sleeves for improved comfort & mobility
- Fleece lined hand pockets, outer & inner chest pocket with splashproof zips
- Reflective print detail
- Hanger loop for easy drying & storage

Branding

Personalisation available on request



Material

100% F.D Nylon Tactel
Cordura Overlays 100% Nylon

Sizes

S / M / L / XL / XXL

 Red

SKU

430590



Hi-vis hood with full adjustment, packs into collar



Cordura reinforcements at elbows & lower back

Large capacity pockets



TX-3+

OFFSHORE HIFIT



Features

- TX-3+ DWR coated, 3-layer nylon material with Tactel® yarns for durability & flexibility
- Waterproof, windproof & breathable
- Fully taped seam construction
- Cordura® reinforced panels for abrasion resistance
- Compatible with the Offshore Jacket for ultimate protection
- Protective & fully adjustable fit
- Centre zip with internal gusset for ultimate waterproofing
- Splashproof zips for chest pockets
- Self draining large bellow pocket at front thigh
- Articulated knees for improved comfort & mobility
- Elasticated waist & snag-proof adjustment tabs
- Reflective print detail

Branding

Personalisation available on request



Material

100% F.D Nylon Tactel
Cordura Overlays 100% Nylon

Sizes

S / M / L / XL / XXL

 Red

SKU

430600



Secure and adjustable
bib for comfort & durability

Cordura
reinforced
seat

Fully taped seams
for maximum
waterproofness



TX-3

COAST JACKET



Features

- TX-3 DWR, coated 3-layer polyester material with mechanical stretch
- Fully taped seam construction
- Waterproof, breathable & lightweight
- Protective & fully adjustable fit
- Splash proof zips
- PU lined adjustable cuffs
- Unlined for reduced weight & increased flexibility
- Fleece lined collar
- Outer & inner chest pocket
- Reflective print detail

Branding

Personalisation available on request



Material

100% Polyester

Sizes

S / M / L / XL / XXL

▲ Red ▲ Grey

SKU

430610 Grey

430611 Red



Ergonomic hood packs away into collar



Cuff covers with full adjustment & smoothskin liner

Lightweight, flexible splashproof zips



TX-3

COAST HIFIT



Features

- TX-3 DWR coated, 3-layer polyester material with mechanical stretch
- Fully taped seam construction
- Waterproof, breathable & lightweight
- Adjustable elastic straps
- Cordura® reinforcing panels for abrasion resistance
- Unlined for reduced weight & increased flexibility
- 3x pockets with splashproof zips
- Centre zipper with internal gusset for ultimate waterproofing
- Elasticated waist & snag-proof adjustment tabs

Branding

Personalisation available on request



Material

100% Polyester

Cordura Overlays 100% Nylon

Sizes

S / M / L / XL / XXL

▲ Grey ▲ Black

SKU

430620 Grey

430621 Black



Elasticated areas at chest & waist for ergonomic fit

Splashproof zip pockets

Reinforced knees



TX-T

SOFTSHELL JACKET



Features

- TX-T DWR coated, thermal stretch material
- Windproof & breathable membrane
- Protective & fully adjustable fit
- Fleece lined hand pockets
- Chest pocket
- Hood with adjustment
- Self-locking eyelet hem adjustment system

Material

88% Nylon
12% Spandex

Sizes

S / M / L / XL / XXL

▲▼ Black ▲▼ Slate / Lime

SKU

430630 Black
430632 Slate / Lime

Branding

Personalisation available on request



Fully adjustable hood

Chest pocket

Shaped & adjustable hem at back & cuffs





LIGHTWEIGHT UNDERSUIT

Features

- TOG rating: 1
- Stretch fleece
- Double action front zip
- Ankle & thumb loops

Approvals

- UKCA/ CE mark
- PPE Cat I Regulation (EU)/2016/42517

Material

100% polyester fleece

Sizes

XS / S / M / MB / L / LB / XL / XXL

▲▼ Black

SKU

200102



THINSULATE UNDERSUIT (200G)

Features

- TOG rating: 6 (200g)
- Double action front zip
- Wicking fleece liner
- Thermal 200g Thinsulate® wadding
- Breathable
- Tough nylon ripstop outer for added durability
- Hip pockets
- Elasticated back waist

Approvals

- UKCA/ CE mark
- PPE Cat I Regulation (EU)/2016/42517

Outer material

100% Nylon ripstop

Lining

100% Polyester fleece

Fill

Thinsulate® 200gsm (200g)

Sizes

S / M / LM / MB / L / LB / XL / XXL

▲▼ Black

SKU

200132



NARIN THERMA TOP & TROUSERS

Features

- Wet & dry thermal insulation
- Contour control seams
- Flatlock comfort stitch
- Thumb loops/ stirrups

Material

84% Polyester
16% Spandex (250gsm)

Sizes

S / M / L / XL / XXL

▲▼ Black

SKU

200210 Narin Therma Top
200211 Narin Therma Trousers



KIT BAG

(70L & 90L)

Features

- 100% Waterproof with internal welded seams
- Water resistant 500D Tarpaulin material
- Adjustable roll top buckle closure with compression straps
- Ergonomic padded backpack system
- Adjustable shoulder & waist straps
- Whistle buckle attachment at chest for added safety
- External front waterproof zip pocket for quick access to belongings
- Front waterproof zip
- 2x Carry handle
- Compression valve
- Large capacity
- Personalised branding available

Material

500D Tarpaulin PVC REACH

Sizes

70L / 90L

▲▼ Black

SKU

360420-0070 70L
360420-0090 90L



OSEA DRY BACKPACK

2.0 (20L & 40L)

Features

- 100% Waterproof with internal welded seams
- Water resistant 500D Tarpaulin material
- Adjustable roll top buckle closure with compression straps
- Ergonomic padded backpack system
- Adjustable shoulder & waist straps
- Whistle buckle attachment at chest for added safety
- External front waterproof zip pocket for quick access to belongings
- Front waterproof zip
- Carry handle
- Compression valve
- 2x outer mesh pockets

Material

500D Tarpaulin PVC REACH

Sizes

20L / 40L

▲▼ Black

SKU

360351-0020 20L
360351-0040 40L



SEATON

DRY ROLL TOP BAG

Features

- 100% Waterproof with internal welded seams
- Anti slip, heavy duty base
- Adjustable roll top buckle closure with D-ring attachment points
- Front clear window to help locate contents easily
- Adjustable shoulder carry strap
- Compression valve included on 40L & 60L size only

Material

250D Tarpaulin PVC REACH

Sizes

5L / 10L / 15L / 20L / 40L / 60L

 **Yellow**

SKU

360340



SEAFORD

3 PIECE DRY BAG SET

Features

- Taped inner seams
- Roll top closure
- Outer drawstring bag included

Material

75D Rip Stop Nylon

Sizes

2L / 5L / 10L

   **Blue / Red / Yellow**

SKU

360330-0001



ESSENTIAL HELMET

Features

- ABS outer shell
- Turn wheel adjuster
- Quick release buckle with nylon adjustable chin strap
- Fully vented
- Moulded EVA foam liner with EVA ear protectors

Approvals

- UKCA/ CE mark
- PPE Regulation (EU)/2016/42517 BS EN 1385:2012

Material

Outer: ABS

Foam Liner: EVA

Sizes

XS-S (50-54CM) / M (54-58CM) / L-XL (58-62CM)



SKU

225670



PERFORMANCE+ HELMET

Features

- ABS outer shell
- Turn wheel adjuster
- Quick release buckle with nylon adjustable chin strap
- Fully vented
- Moulded EVA foam liner with removable EVA ear protectors

Approvals

- UKCA/ CE mark
- PPE Regulation (EU)/2016/42517 BS EN 1385:2012

Material

Outer: ABS

Foam Liner: EVA

Sizes

S (53-55cm) / M (55-57cm) / L (57-59cm)



SKU

225666



3MM COMMERCIAL GLOVE

Features

- Glued & blind stitch construction
- 3mm neoprene
- PU palm print reinforcement
- Elasticated wrist strap with hook & loop for adjustment

Material

3mm REACH Compliant neoprene

Sizes

XS / S / M / L / XL

▲▼ Black

SKU

310103



AMBLERS SAFETY

RIDGEWAY

RESCUE BOOTS

Features

- Moulded TPU toe guard & heel counter
- Deep padded mesh collar
- Outsole heat resistant to 300°C
- Oil resistant outsole
- Energy absorbing heel
- Smart & speedy fastening lacing system
- Antistatic boot
- Electrostatic Discharge – Dissipative

Material

Upper: Rip-stop with embossed TPU support

Inner: Breathable waterproof membrane & mesh

Footbed: Removable moulded PU

UK Sizes

6 / 6.5 / 7 / 8 / 9 / 10 / 10.5 / 11 / 12 / 13

▲▼ Black

SKU

275300



WATERSPIDER

(LACED) BOOTS

Features

- Fast Roping System located on instep, incorporating super fabric to prevent damage & heat build up
- Plate in mid-sole for climbing ladders
- Strategically positioned fast drainage ports
- Octopod tactical out sole
- Anti-slip & oil resistant sole
- Neoprene upper for flexibility & comfort when swimming & also fast drying
- Adjustable ankle strap
- State of the art Ortholite footbed
- Flexible toe fins
- Easy grip pull tab
- Zip boot with lace overlay

Material

Upper: Neoprene reinforced with super fabric at fast roping wear area. Toecap and heel reinforced with rubberised material

Outersole: Octopod tactical outsole

Footbed: Magnum Ortholite footbed

UK Sizes

5 / 6 / 7 / 8 / 9 / 10 / 11 / 12 / 13

▲▼ Black

SKU

275265







FABRICS

COMPARISON & SELECTION GUIDE

Choosing the Right Drysuit Fabric

Each of our drysuit fabrics is carefully selected to balance durability, performance, and comfort based on the demands of the working environment.

The table below highlights key characteristics to help with your choice:

Fabric	Weight (g/m ²)	Waterproofing	Breathability	Durability	Flexibility/ Comfort	Best for
Clotex® Polyester Tri-Laminate	385	Excellent (Butyl)	No	High	Good (soft drape)	Heavy-duty, general commercial use
Breathable Nylon Tri-Laminate	225	Very Good (Microporous)	Yes	Moderate	Excellent	Active use, warmer climates, regular wear
Texturised Polyester Twill Tri-Laminate	480	Excellent (Butyl)	No	Very High	Moderate	Industrial, abrasive environments
N100N High- Tenacity Nylon Laminate	240	Excellent (Butyl)	No	High	Good	Lightweight, tough commercial applications

Clotex Polyester Tri-Laminate with Butyl Rubber Inter-ply (385g/m²)

Designed for rugged professional use, this tri-laminate fabric pairs durable polyester layers with a central butyl rubber membrane for complete waterproofing. Weighing 385 g/m², it offers high abrasion resistance, long-term reliability, and a softer feel for better mobility and comfort.

Breathable Nylon Tri-Laminate with Microporous Coating (225g/m²)

Lightweight and comfortable for extended wear, this 225 g/m² tri-laminate pairs durable nylon layers with a breathable microporous membrane. It balances low weight with robust performance, ideal for regular-use drysuits. The breathable design releases internal moisture to regulate temperature and reduce condensation, without sacrificing waterproofness or durability.

Texturised Polyester Twill Tri-Laminate with Butyl Rubber Inter-ply (480gm/mt²)

Built for strength and abrasion resistance, this tri-laminate pairs a tough texturised polyester twill outer with a butyl rubber core for waterproofing and a polyester lining for comfort. Its twill weave boosts tear strength, making it ideal for heavy-duty commercial or industrial drysuits.

N100N High-Tenacity Nylon Laminate with Butyl Rubber Inter-ply (240g/m²)

This 240 g/m² laminate combines high-tenacity nylon with a butyl rubber core for exceptional strength, waterproofing, and resistance to punctures, tears, and abrasions. Its low-bulk profile suits demanding environments without sacrificing protection or longevity.



PERSONALISATION

Typhoon's personalisation service is meticulously crafted to provide our customers with a wide array of branding options including tri-max heat printed and encapsulated reflective logos to promote your unique brand identity.



SIZE CHARTS

All our products come in UK sizes, please see below a corresponding size guide.

Drysuits & Underlayers - Mens

UK SIZES (cm)	XS	S	SM	M	MB	LM	L	LB	XL	XXL	XXXL
Height	163	168	173	178	178	183	188	188	193	198	203
Chest	86	91	96	102	117	107	112	122	117	122	137
Waist	84	91	94	99	114	104	109	119	114	119	137
Hip	89	94	99	104	120	109	115	125	120	125	139

Drysuits - Womens

UK SIZES (cm)	S	SM	SR	M	LM	LR	L
Height	158	163	163	168	173	173	178
Chest	86	91	107	96	102	117	107
Waist	84	90	104	94	99	114	104
Hip	102	104	119	107	109	125	112

All Weather Gear - Jackets

UK SIZES (cm)	S	M	L	XL	XXL
Height	91 - 98	99 - 105	106 - 112	113 - 119	120 - 127
Chest	76 - 81	81 - 86	86 - 91	91 - 96	96 - 102

All Weather Gear - Hifits

UK SIZES (cm)	S	M	L	XL	XXL
Height	163 - 168	170 - 178	178 - 185	185 - 190	190 - 195
Chest	91 - 98	99 - 105	106 - 112	113 - 119	120 - 127
Waist	76 - 81	81 - 86	86 - 91	91 - 96	96 - 102

Helmets

UK SIZES (cm)	XS	S	XS - S	M	L	L - XL
Performance	51 - 53	53 - 55	-	55 - 57	57 - 59	-
Essential	-	-	50 - 54	54 - 58	-	58 - 62

WARRANTY

All Typhoon non-drysuit products are covered by a one-year warranty against defects in materials and workmanship.

All Typhoon commercial drysuits come with a two-year warranty covering materials and workmanship. This excludes neoprene and latex seals (neck, wrist, socks, and feet), which are subject to wear as outlined in the product specifications.

This warranty is valid only for the original purchaser and applies only to products purchased as first-quality goods. Our liability is limited to defects in workmanship and materials, including return carriage to the purchaser.

Exclusions:

This warranty does not cover damage resulting from abuse, misuse, neglect, improper maintenance, or normal wear and tear. It also does not cover consequential or incidental damages, or injury to persons or property. Warranty excludes product seconds and samples.

This warranty does not affect your statutory rights.



For more information, please visit:

www.typhoon-int.co.uk/warranty



SPARES

STYLE CODE	PRODUCT NAME
495007-0004	Universal Dry Suit Repair/Maintenance Kit (N100N Patches)
495007-0005	Universal Dry Suit Repair/Maintenance Kit (Black Clotex Patches)
780025-0001R	25mm neoprene tape per metre
780040-0001R	40mm neoprene tape per metre
830002-0029	STORMOPRENE 1 part adhesive
830003-0001	Talc 1 x bottle French chalk 130g/4.5oz
830003-0003P	Beeswax-carton 16 cubes 28g/1oz
740001	Latex neck seals
740300	Latex cuff seals (pair)
740301	Latex Conical Cuff Seal (pair)
740501	Latex Ankle Seals (pair)
740600	Latex Socks (pair)
740307	Heavy Duty cuff seals
740320	Glideskin cuff seals (surface drysuits only - pair)
740024	Glideskin neck seals (surface drysuits only)
275211	Fabric Socks (Pair)
300221	Neoprene Socks (pair)
900110	Zippered Pocket
900120	Bellow Pocket
900130	Pocket for Chisel Knife
720001	Drysuit Zip (28"-42")
720001	Con Zip (10")
720003	HD Zip (30"-42")
720013	Aquaseal Plastic zip
840100-0012	Changing mat bag







www.typhoon-int.co.uk | sales@typhoon-int.co.uk | +44 (0)1642 486104

Typhoon International Limited, Limerick Road, Redcar, Cleveland, TS10 5JU